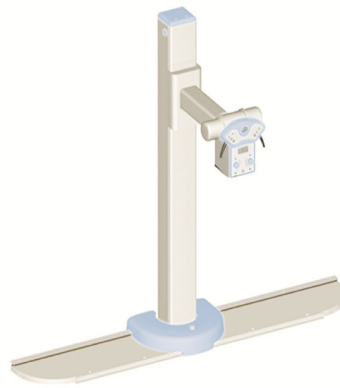




# PRODUCT CATALOG



**CSST**



**MILL-FMTSAD**



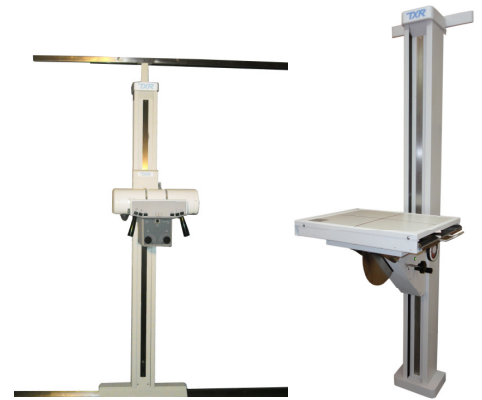
**URS-T LP**



**DRAGON**



**H.F. GENERATOR**



**VERT-EX**



**MULT-FWFTT-G**

***Confidential Dealer Pricing  
October, 2016***



# Table of Contents

<b>Model #</b>	<b>Description</b>	<b>Page</b>
<b><u>Advantage Plus Medical Systems</u></b>		
CTM	CTM, Elevating Table, Wall Stand	1-2
CTM-AT	CTM with Auto Tracking, Elevating Table, Wall Stand	3-4
CTM-AP	CTM with Auto Positioning, Elevating Table, Wall Stand	5-6
CTM-SR	CTM Single Receptor Solution with Auto Tracking	7-8
URS-T LP	Universal Radiographic System – URS	9-10
URS-T LP Plus	Universal Radiographic System – URS with Auto Positioning	11-12
ML-1	Floor Mount with Digital Readout, Elevating Table, Wall Stand	13-14
<b><u>Value Plus Medical Systems</u></b>		
GP-3	Elevating Table with Floor-to-wall, Rotate Tube Stand	15-16
GP-4	Elevating Table with Floor-to-wall, Non-Rotate Tube Stand	17-18
GP-5	4-way Float Table with Floor-to-wall, Rotate Tube Stand	19-20
GP-6	4-way Float Table with Floor-to-wall, Non-Rotate Tube Stand	21-22
GP-7	Stationary top table with Floor-to-wall, Non-Rotate Tube Stand	23-24
GP-9	VertEx Tilting Upright and Extremity System	25-26
GP-10	Dragon Portable, 4.0kW	27
GP-11	Dragon Portable, 8.0kW	28
GP-10-LP	Dragon Portable, 4.0kW with Laptop and Toshiba DR Panel	29
GP-10-DR	Dragon Portable, 4.0kW with Toshiba DR Panel	30
GP-12	One-piece Portable units	31
<b><u>Value Plus Chiropractic Systems</u></b>		
CH-1	14 x 17" Upright with Floor-to-wall Tube Stand	33-34
GP-9	VertEx Tilting Upright and Extremity System	35-36
<b><u>Value Plus Veterinary Systems</u></b>		
S1SV-32	4-Way Float with Integrated Variable SID Tube Stand	39-40
V1DS-M	14 x 17" Digital Vet, 4-Way Float, 6MP CCD, Membrane Console	41-42
V1DS-T	14 x 17" Digital Vet, 4-Way Float, 6MP CCD, Touch Screen Console	43-44
V-2D	14 x 17" DigitalEase 4-way Float, 9MP CCD	45-46
V3SV	4-Way Float Digital Vet with 17" x 17" DR Flat Panel	47
V-DUPG-VW	17"x17" DR Flat Panel Digital Vet Upgrade	48
<b><u>Generators</u></b>		
SHF-210/SHF-310AP	20 kW, 320mA and 32 kW, 400 mA High Frequency Generators	51-52
SHF-410/SHF-510AP	40 kW, 500mA and 50 kW, 640 mA High Frequency Generators	53-54
SHF-635/SHF-835AP	64 kW, 640mA and 80 kW, 800 mA High Frequency Generators	55-56
SHF-310/410AP PSU	32 kW 400mA and 40 kW 500mA Battery Generators	57-58
<b><u>Components</u></b>		
Various	Tube Stands	61-62
Various	Medical Tables	63-64
Various	Wall Stands	65
Various	X-Ray Tubes	66
Various	HV Cables, Collimators, Grids	67
Various	Grid Cabinets, Buckys, Cassette Trays	68
<b><u>Parts</u></b>		69-71
<b><u>Warranty, Terms and Conditions</u></b>		72-75

# Configuration CTM

## CTM, Elevating Table and Wall Stand

<u>System #</u>	<u>CTM, Elevating Table, Wall Stand</u>
CTM-SHF410AP	40kW, 500mA, 125kVp, 1-phase, 220/240VAC, E7242 200kHU Tube
CTM-SHF510AP	50kW, 640mA, 125kVp, 1-phase, 220/240VAC, E7884 300kHU Tube
CTM-SHF645AP	64kW, 640mA, 150kVp, 3-phase, 380/480VAC, HSS, E7252 300kHU Tube
CTM-SHF845AP	80kW, 800mA, 150kVp, 3-phase, 380/480VAC, HSS, E7254 400kHU Tube
<p><b><i>HF generators supplied with APR, table mount and hand switch.</i></b>  <b><i>See options for 3-phase upgrades on SHF410 and SHF510 generators</i></b></p>	

<u>CAT NO.</u>	<u>DESCRIPTION</u>
<b>MILL-EL-B</b>	<p><b>Elevating, Four Way Float Top Table – <u>750 lb. Patient Load</u></b></p> <ul style="list-style-type: none"> <li>• 86.5" x 31.5" float table top</li> <li>• 43.3" longitudinal and 9.5" lateral table top travel</li> <li>• Vertical Travel 19.69" x 35.43"</li> <li>• Collision protection</li> <li>• Super Speed Bucky</li> <li>• Heavy duty manual cassette tray</li> <li>• 103 line, 10:1 ratio, 34-44" focal range grid</li> </ul>
<b>CSST</b>	<p><b>Nova CTM - Manual Operation</b></p> <ul style="list-style-type: none"> <li>• Aluminum construction, reduces weight</li> <li>• 360° vertical and horizontal rotation</li> <li>• 15' longitudinal rails / 10' bridge</li> <li>• Ceiling Rail for Cable draping of the high voltage cables</li> <li>• Maximum transverse travel 92.5" (235.2 cm)</li> <li>• Maximum longitudinal travel 187.5" (476.5 cm)</li> <li>• Vertical travel 63" (160 cm)</li> <li>• Digital display of tube for SID and tube angulation</li> <li>• Intuitive color coded lock releases</li> <li>• Electromagnetic brakes</li> <li>• Electromagnetic angulations and rotation locks remain ON even when system is OFF. The electromagnetic longitudinal and transverse locks remain ON only when system is ON.</li> <li>• Tube rotation around vertical column <math>\pm 135^\circ</math> with detents every <math>45^\circ</math></li> <li>• Tube rotation around column horizontal axis <math>\pm 180^\circ</math> with detents every <math>45^\circ</math></li> <li>• Plug in electrical assemblies reduce time associated with installation, calibration &amp; maintenance</li> <li>• A527005-01 Kit, Nova Mechanical Detent</li> <li>• Trunnion Tube Mount and Cover for X-Ray Tube</li> </ul>
<b>MIL-WBS-ADT</b>	<p><b>Wall Stand, floor wall mount</b></p> <ul style="list-style-type: none"> <li>• Vertical travel 16" (41cm) to 75" (191cm), Electromagnetic locks</li> <li>• Reciprocating Bucky with Manual Cassette Tray</li> <li>• 103 line, 10:1 ratio aluminum grid</li> </ul>
<b>E7242X</b>	<b>X-Ray Tube</b> , – 200,000 heat unit, 0.6-1.5mm focal spots, 270° horn angle
<b>SCOL-225ETBLL</b>	<b>Collimator</b> – Certified manual collimator with LED, laser light, swivel mount
<b>HT20M/FC20M</b>	<b>Cables</b> – pair – 65' long (20 meters) with vinyl cable wrap

# CTM Options

CAT NO.	DESCRIPTION
---------	-------------

**Generator Options:**

PD	Pedestal for control console, replaces table mount
CTSC	Touch screen console
AEC-1C	Automatic Exposure Control with ADAPTA to accept up to three (3) Ion Chambers. Includes one ICX159 ion chamber with interconnect cable for table
HSS-1T	High speed starter, 1 tube (for SHF410 and SHF510 generators)
SHF 3PH-220	3-phase, 220 VAC generator, in place of 1-phase
SHF 3PH-380	3-phase, 380 VAC generator, in place of 1-phase
SHF 3PH-480	3-phase, 480 VAC generator, in place of 1-phase
VAD-2004-EX	External Dose Area Product (DAP) Meter, for analog systems
VAD-2004-INT	Integrated Dose Area Product (DAP) Meter with 15m cable, for systems With touch screen console, or for digital systems
PAD-2004-Z	Data Printer for DAP Meter with roll of 2100 labels, 57x32 (2.24x1.26")

**Table Options:**

1011783444	178 line, 10:1 ratio grid, replaces 103 line
ZA0012	Hand Grips

**CTM Options:**

RL34	11' long longitudinal rails or RL4 13' long longitudinal rails
RL53	17' long longitudinal rails
RL6	20' long longitudinal rails
RT225	7' Bridge – RT25 8' Bridge or RT275 9' Bridge
SS-CTM	Support Structure—provides suspension of CTM without unistrut
LT-CTM	Lifting tool for CTM

**Wall Stand Options:**

ICX-162	Ion Chamber with interconnect cable, Left Hand Load
ICX-192	Ion Chamber with interconnect cable, Right Hand Load
TWBS-TILT	Tilt wall stand, + 90° to -20°
TRA001	Overhead Patient Hand Support (A6832-01)
ZA0012B	Side Mounted Patient Hand grips (A6835-01)
1011784072	178 line, 10:1 ratio grid, replaces 103 line

**Tube Options:**

E7884X	300,000 H.U., 150 kVp, 0.6-1.2mm, in place of E7242X
E7252X	300,000 H.U., 150 kVp, 0.6-1.2mm HSS, in place of E7884X
E7254X	400,000 H.U., 150 kVp, 0.6-1.2mm HSS, in place of E7252X
E7869X	600,000 H.U., 150 kVp, 0.6-1.2mm HSS, in place of E7254X

# Configuration CTM-AT

## CTM, Elevating Table and Wall Stand with Auto-Tracking

<b>System #</b>	<b>CTM, Elevating Table, Wall Stand</b>
CTM-AT-SHF410AP	40kW, 500mA, 125kVp, 1-phase, 220/240VAC, E7242 200kHU Tube
CTM-AT-SHF510AP	50kW, 640mA, 125kVp, 1-phase, 220/240VAC, E7884 300kHU Tube
CTM-AT-SHF645AP	64kW, 640mA, 150kVp, 3-phase, 380/480VAC, HSS, E7252 300kHU Tube
CTM-AT-SHF845AP	80kW, 800mA, 150kVp, 3-phase, 380/480VAC, HSS, E7254 400kHU Tube
<b>HF generators supplied with APR, table mount and hand switch. See options for 3-phase upgrades on SHF410 and SHF510 generators</b>	

<b>CAT NO.</b>	<b>DESCRIPTION</b>
<b>NET4000VAT</b>	<b>Elevating Table with Auto Tracking Capabilities</b> <ul style="list-style-type: none"> <li>• 660 lb (300 kg) weight capacity. 86.5" (220 cm) x 34" (86.8 cm) table top</li> <li>• Vertical travel of 21.6" (55cm) to 35.4" (90cm)</li> <li>• Adjustable automatic stops at 3 positions</li> <li>• Collision protection</li> <li>• Carbon Fiber Table Top</li> <li>• Table top movement: <ul style="list-style-type: none"> <li>- Longitudinal 43" (+24" / -19.5")</li> <li>- Transverse 10" (±5")</li> <li>- Vertical 14"</li> </ul> </li> <li>• Longitudinal Bucky travel 24"</li> <li>• Reciprocating Bucky with Manual Cassette Tray</li> <li>• 103 line, 10:1 ratio, aluminum grid</li> </ul>
<b>CSAT-TFT</b>	<b>Nova CTM – Motorized with Vertical Synchronization and touch screen panel (for Auto Tracking to Table and/or Wall Stand)</b> <ul style="list-style-type: none"> <li>• Aluminum construction, reduces weight</li> <li>• 360° vertical and horizontal rotation</li> <li>• 15' longitudinal rails / 10' bridge</li> <li>• Ceiling Rail for Cable draping of the high voltage cables</li> <li>• Maximum transverse travel 92.5" (235.2 cm)</li> <li>• Maximum longitudinal travel 187.5" (476.5 cm)</li> <li>• Vertical travel 63" (160 cm)</li> <li>• Digital display of tube for SID and tube angulation</li> <li>• Intuitive color coded lock releases</li> <li>• Electromagnetic brakes</li> <li>• Electromagnetic angulations and rotation locks remain ON even when system is OFF. The electromagnetic longitudinal and transverse locks remain ON only when system is ON.</li> <li>• Tube rotation around vertical column ±135° with detents every 45°</li> <li>• Tube rotation around column horizontal axis ±180° with detents every 45°</li> <li>• Plug in electrical assemblies reduce time associated with installation, calibration &amp; maintenance</li> <li>• Trunnion Tube Mount and Cover for X-Ray Tube</li> <li>• A527005-01 Kit, Nova Mechanical Detent</li> <li>• Automatic alignment of tube with table and/or wall stand</li> </ul>
<b>MIL-WBS-ADAT</b>	<b>Wall Stand, floor-to-wall mounted with Auto Tracking Capabilities</b> <ul style="list-style-type: none"> <li>• Vertical travel 16" (41cm) to 75" (191cm), Electromagnetic locks, Manual movement</li> <li>• Reciprocating Bucky with Manual Cassette Tray</li> <li>• 103 line, 10:1 ratio aluminum grid</li> </ul>
<b>E7242X</b>	<b>X-Ray Tube</b> , – 200,000 heat unit, 0.6-1.5mm focal spots, 270° horn angle
<b>SCOL-225ETBLL</b>	<b>Collimator</b> – Certified manual collimator with LED, laser light, swivel mount
<b>HT20M/FC20M</b>	<b>Cables</b> – pair – 65' long (20 meters) with vinyl cable wrap

# CTM-AT Options

CAT NO.	DESCRIPTION
---------	-------------

### Generator Options:

PD	Pedestal for control console, replaces table mount
CTSC	Touch screen console
AEC-1C	Automatic Exposure Control with ADAPTA to accept up to three (3) Ion Chambers. Includes one ICX159 ion chamber with interconnect cable for table
HSS-1T	High speed starter, 1 tube (for SHF410 and SHF510 generators)
SHF 3PH-220	3-phase, 220 VAC generator, in place of 1-phase
SHF 3PH-380	3-phase, 380 VAC generator, in place of 1-phase
SHF 3PH-480	3-phase, 480 VAC generator, in place of 1-phase
VAD-2004-EX	External Dose Area Product (DAP) Meter, for analog systems
VAD-2004-INT	Integrated Dose Area Product (DAP) Meter with 15m cable, for systems With touch screen console, or for digital systems
PAD-2004-Z	Data Printer for DAP Meter with roll of 2100 labels, 57x32 (2.24x1.26")

### Table Options:

ZA0014B	Lateral cassette holder
ZA0012C	Handgrips
DP	Two sided foot treadle
1011783444	178 line, 10:1 ratio grid, replaces 103 line

### CTM Options:

RL34	11' long longitudinal rails or RL4 13' long longitudinal rails
RL53	17' long longitudinal rails
RL6	20' long longitudinal rails
RT225	7' Bridge – RT25 8' Bridge or RT275 9' Bridge
SS-CTM	Support Structure—provides suspension of CTM without unistrut
LT-CTM	Lifting tool for CTM

### Wall Stand Options:

ICX-162	Ion Chamber with interconnect cable, Left Hand Load
ICX-192	Ion Chamber with interconnect cable, Right Hand Load
TWBS-TILTAT	Tilt wall stand, +90° / -20°, manual movement
NBSTILTMAT	<b>Motorized</b> , NBS tilt wall stand, + 90° / -20°
TRA001	Overhead Patient Hand Support (A6832-01)
ZA0012B	Side Mounted Patient Hand grips (A6835-01)
1011784072	178 line, 10:1 ratio grid, replaces 103 line

### Tube Options:

E7884X	300,000 H.U., 150 kVp, 0.6-1.2mm, in place of E7242X
E7252X	300,000 H.U., 150 kVp, 0.6-1.2mm HSS, in place of E7884X
E7254X	400,000 H.U., 150 kVp, 0.6-1.2mm HSS, in place of E7252X
E7869X	600,000 H.U., 150 kVp, 0.6-1.2mm HSS, in place of E7254X

### Collimator Options:

SCOL-225MAUTL	Automatic collimator and 2 size sensing trays, replaces manual collimator
---------------	---

# Configuration CTM-AP

## CTM, Elevating Table, Tilting Wall Stand and Auto-Positioning

<u>System #</u>	<u>CTM, Elevating Table, Wall Stand</u>
CTM-AP-SHF410AP-TS	40kW, 500mA, 125kVp, 1-phase, 220/240VAC, E7242 200kHU Tube
CTM-AP-SHF510AP-TS	50kW, 640mA, 125kVp, 1-phase, 220/240VAC, E7884 300kHU Tube
CTM-AP-SHF645AP-TS	64kW, 640mA, 150kVp, 3-phase, 380/480VAC, HSS, E7252 300kHU Tube
CTM-AP-SHF845AP-TS	80kW, 800mA, 150kVp, 3-phase, 380/480VAC, HSS, E7254 400kHU Tube

***HF generators supplied with APR, table mount, hand switch and TOUCH SCREEN Control Console.  
See options for 3-phase upgrades on SHF410 and SHF510 generators***

<u>CAT NO.</u>	<u>DESCRIPTION</u>
<b>NET4000AP</b>	<b>Elevating Table with Auto Positioning Capabilities</b> <ul style="list-style-type: none"> <li>• 660 lb (300 kg) weight capacity. 86.5" (220 cm) x 34" (86.8 cm) table top</li> <li>• Vertical travel of 21.6" (55cm) to 35.4" (90cm)</li> <li>• Adjustable automatic stops at 3 positions</li> <li>• Collision protection</li> <li>• Carbon Fiber Table Top</li> <li>• Table top movement:               <ul style="list-style-type: none"> <li>- Longitudinal 43" (+24" / -19.5")</li> <li>- Transverse 10" (±5")</li> <li>- Vertical 14"</li> </ul> </li> <li>• Longitudinal Bucky travel 24"</li> <li>• Reciprocating Bucky with Manual Cassette Tray</li> <li>• 103 line, 10:1 ratio, aluminum grid</li> </ul>
<b>CSAP</b>	<b>Nova CTM – with Auto Positioning to Table and/or Wall Stand</b> <ul style="list-style-type: none"> <li>• Aluminum construction, reduces weight</li> <li>• 360° vertical and horizontal rotation</li> <li>• 15' longitudinal rails / 10' bridge</li> <li>• Ceiling Rail for Cable draping of the high voltage cables</li> <li>• Maximum transverse travel 92.5" (235.2 cm)</li> <li>• Maximum longitudinal travel 187.5" (476.5 cm)</li> <li>• Vertical travel 63" (160 cm)</li> <li>• Digital display of tube for SID and tube angulation</li> <li>• Intuitive color coded lock releases</li> <li>• Electromagnetic brakes</li> <li>• Electromagnetic angulations and rotation locks remain ON even when system is OFF. The electromagnetic longitudinal and transverse locks remain ON only when system is ON.</li> <li>• Tube rotation around vertical column ±135° with detents every 45°</li> <li>• Tube rotation around column horizontal axis ±180° with detents every 45°</li> <li>• Plug in electrical assemblies reduce time associated with installation, calibration &amp; maintenance</li> <li>• Trunnion Tube Mount and Cover for X-Ray Tube</li> <li>• Automatic alignment of tube with table and/or wall stand</li> </ul>
<b>NBSTILTMAP</b>	<b>Tilting Wall Stand, floor-to-wall mounted with Auto Positioning Capabilities</b> <ul style="list-style-type: none"> <li>• Motorized Vertical travel 16" (41cm) to 75" (191cm), Electromagnetic locks</li> <li>• Reciprocating Bucky with Manual Cassette Tray, 103 line, 10:1 ratio aluminum grid</li> <li>• +90° / -20° tilt angulation</li> </ul>
<b>E7242X</b>	<b>X-Ray Tube</b> , – 200,000 heat unit, 0.6-1.5mm focal spots, 270° horn angle
<b>SCOL-225ETBLL</b>	<b>Collimator</b> – Certified manual collimator with LED, laser light, swivel mount
<b>HT20M/FC20M</b>	<b>Cables</b> – pair – 65' long (20 meters) with vinyl cable wrap

# CTM-AP Options

CAT NO.	DESCRIPTION
---------	-------------

**Generator Options:**

PD	Pedestal for control console, replaces table mount
AEC-1C	Automatic Exposure Control with ADAPTA to accept up to three (3) Ion Chambers. Includes one ICX159 ion chamber with interconnect cable for table
HSS-1T	High speed starter, 1 tube (for SHF410 and SHF510 generators)
SHF 3PH-220	3-phase, 220 VAC generator, in place of 1-phase
SHF 3PH-380	3-phase, 380 VAC generator, in place of 1-phase
SHF 3PH-480	3-phase, 480 VAC generator, in place of 1-phase
VAD-2004-EX	External Dose Area Product (DAP) Meter, for analog systems
VAD-2004-INT	Integrated Dose Area Product (DAP) Meter with 15m cable, for systems With touch screen console, or for digital systems
PAD-2004-Z	Data Printer for DAP Meter with roll of 2100 labels, 57x32 (2.24x1.26")

**Table Options:**

ZA0014B	Lateral cassette holder
ZA0012C	Handgrips
DP	Two sided foot treadle
1011783444	10:1 ratio, 178 line grid for table, replaces 103 line

**CTM Options:**

RL34	11' long longitudinal rails or RL4 13' long longitudinal rails
RL53	17' long longitudinal rails
RL6	20' long longitudinal rails
RT225	7' Bridge – RT25 8' Bridge or RT275 9' Bridge
SS-CTM	Support Structure—provides suspension of CTM without unistrut
LT-CTM	Lifting tool for CTM

**Wall Stand Options:**

ICX-162	Ion Chamber with interconnect cable, Left Hand Load
ICX-192	Ion Chamber with interconnect cable, Right Hand Load
NBSMTILTMAP	Wall Stand with Motorized vertical travel, rotation & angulation
TRA003	Overhead Patient Hand Support
ZA0012E	Side Mounted Patient Hand grips
1011784072	10:1 ratio, 178 line grid for wall stand, replaces 103 line

**Tube Options:**

E7884X	300,000 H.U., 150 kVp, 0.6-1.2mm, in place of E7242X
E7252X	300,000 H.U., 150 kVp, 0.6-1.2mm HSS, in place of E7884X
E7254X	400,000 H.U., 150 kVp, 0.6-1.2mm HSS, in place of E7252X
E7869X	600,000 H.U., 150 kVp, 0.6-1.2mm HSS, in place of E7254X

**Collimator Options:**

SCOL-225MAUTL	Automatic collimator and 2 size sensing trays, replaces manual collimator
---------------	---



# Configuration CTM-SR

## CTM, Single Receptor System

<b>System #</b>	<b>CTM, Mobile Elevating Table, Tilt Wall Stand</b>
CTM-SHF410AP-SR	40kW, 500mA, 125kVp, 1-phase, 220/240VAC, E7242 200kHU Tube
CTM-SHF510AP-SR	50kW, 640mA, 125kVp, 1-phase, 220/240VAC, E7884 300kHU Tube
CTM-SHF645AP-SR	64kW, 640mA, 150kVp, 3-phase, 380/480VAC, HSS, E7252 300kHU Tube
CTM-SHF845AP-SR	80kW, 800mA, 150kVp, 3-phase, 380/480VAC, HSS, E7254 400kHU Tube
<b>HF generators supplied with APR, table mount and hand switch. See options for 3-phase upgrades on SHF410 and SHF510 generators</b>	

<b>FLEXI-DTECP</b>	<b>Mobile, Elevating, four way float top table, carbon fiber top with floor fixing pins</b> <ul style="list-style-type: none"> <li>Battery operated, allows full day use on charge</li> <li>96" x 35" carbon fiber top</li> <li>62.2" Longitudinal Travel; 7.8" Transverse Travel</li> <li>Minimum table height: 23.6"; Maximum table height: 39.4"</li> <li>Vertical travel of 15.8"</li> <li>440 lb weight capacity</li> <li>Battery level and battery charging indicators, 3-stage</li> <li>Two (2) fixation pins allowing the table to be fixed at the same location all the time, or allowing the table to be moved around one pin to work with the wall stand</li> <li>Anti Collision Protection, Electromagnetic Brakes and Foot Lever Positive Wheel Lock</li> </ul>
<b>CSAT-TFTS</b>	<b>Nova CTM – Single Receptor Solution with touch screen panel to work with auto tracking</b> <ul style="list-style-type: none"> <li>Aluminum construction, reduces weight</li> <li>360° vertical and horizontal rotation</li> <li>15' longitudinal rails / 10' bridge</li> <li>Ceiling Rail for Cable draping of the high voltage cables</li> <li>Maximum transverse travel 92.5" (235.2 cm)</li> <li>Maximum longitudinal travel 187.5" (476.5 cm)</li> <li>Vertical travel 63" (160 cm)</li> <li>Digital display of tube for SID and tube angulation</li> <li>Intuitive color coded lock releases</li> <li>Electromagnetic brakes</li> <li>Electromagnetic angulations and rotation locks remain ON even when system is OFF. The electromagnetic longitudinal and transverse locks remain ON only when system is ON.</li> <li>Tube rotation around vertical column <math>\pm 135^\circ</math> with detents every <math>45^\circ</math></li> <li>Tube rotation around column horizontal axis <math>\pm 180^\circ</math> with detents every <math>45^\circ</math></li> <li>Plug in electrical assemblies reduce time associated with installation, calibration &amp; maintenance</li> <li>Trunnion Tube Mount and Cover for X-Ray Tube</li> <li>Automatic alignment of tube with table and/or wall stand</li> </ul>
<b>MILL-NBS-SR</b>	<b>Tilting Wall Stand, floor-to-wall mounted, Single Receptor Solution to work with auto tracking</b> <ul style="list-style-type: none"> <li>Motorized Vertical travel 16" (41cm) to 75" (191cm), Electromagnetic locks</li> <li>Reciprocating Bucky with Manual Cassette Tray, 103 line, 10:1 ratio aluminum grid</li> <li>+90° / -20° tilt angulation</li> </ul>
<b>E7242X</b>	<b>X-Ray Tube</b> , – 200,000 heat unit, 0.6-1.5mm focal spots, 270° horn angle
<b>SCOL-225ETBLL</b>	<b>Collimator</b> – Certified manual collimator with LED, laser light, swivel mount
<b>HT20M/FC20M</b>	<b>Cables</b> – pair – 65' long (20 meters) with vinyl cable wrap

# CTM-SR Options

<b>CAT NO.</b>	<b>DESCRIPTION</b>
----------------	--------------------

**Generator Options:**

PD	Pedestal for control console, replaces table mount
AEC-1C	Automatic Exposure Control with ADAPTA to accept up to three (3) Ion Chambers. Includes one ICX159 ion chamber with interconnect cable for table
HSS-1T	High speed starter, 1 tube (for SHF410 and SHF510 generators)
SHF 3PH-220	3-phase, 220 VAC generator, in place of 1-phase
SHF 3PH-380	3-phase, 380 VAC generator, in place of 1-phase
SHF 3PH-480	3-phase, 480 VAC generator, in place of 1-phase
VAD-2004-EX	External Dose Area Product (DAP) Meter, for analog systems
VAD-2004-INT	Integrated Dose Area Product (DAP) Meter with 15m cable, for systems
PAD-2004-Z	Data Printer for DAP Meter with roll of 2100 labels, 57x32 (2.24x1.26")

**CTM Options:**

RL34	11' long longitudinal rails or RL4 13' long longitudinal rails
RL53	17' long longitudinal rails
RL6	20' long longitudinal rails
RT225	7' Bridge – RT25 8' Bridge or RT275 9' Bridge
SS-CTM	Support Structure—provides suspension of CTM without unistrut
LT-CTM	Lifting tool for CTM

**Wall Stand Options:**

ICX-162	Ion Chamber with interconnect cable, Left Hand Load
ICX-192	Ion Chamber with interconnect cable, Right Hand Load
TRA003	Overhead Patient Hand Support
ZA0012E	Side Mounted Patient Hand grips
1011784072	10:1 ratio, 178 line grid for wall stand, replaces 103 line

**Tube Options:**

E7884X	300,000 H.U., 150 kVp, 0.6-1.2mm, in place of E7242X
E7252X	300,000 H.U., 150 kVp, 0.6-1.2mm HSS, in place of E7884X
E7254X	400,000 H.U., 150 kVp, 0.6-1.2mm HSS, in place of E7252X
E7869X	600,000 H.U., 150 kVp, 0.6-1.2mm HSS, in place of E7254X

**Collimator Options:**

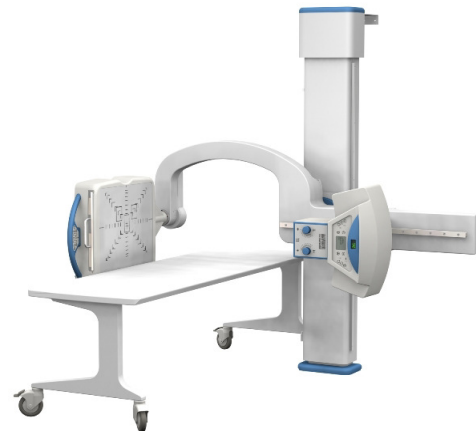
SCOL-225MAUTL	Automatic collimator and 2 size sensing trays, replaces manual collimator
---------------	---

# Configuration URS-T LP Universal Radiographic System

<u>System #</u>	<u>URS-T LP Universal Radiographic System</u>
ULP-SHF410AP	40kW, 500mA, 125kVp, 1-phase, 220/240VAC, E7242 200kHU Tube
ULP-SHF510AP	50kW, 640mA, 125kVp, 1-phase, 220/240VAC, E7884 300kHU Tube
ULP-SHF645AP	64kW, 640mA, 150kVp, 3-phase, 380/480VAC, <b>HSS</b> , E7252 300kHU Tube
ULP-SHF845AP	80kW, 800mA, 150kVp, 3-phase, 380/480VAC, <b>HSS</b> , E7254 400kHU Tube

*HF generators supplied with APR, table mount and hand switch.  
See options for 3-phase upgrades on SFH410 and SHF510 generators.*

<u>CAT NO.</u>	<u>DESCRIPTION</u>
<b>SEU-URS-PLUS</b>	<b>Universal Radiographic Stand - Fully Motorized</b> <ul style="list-style-type: none"> <li>• Floor to wall mounted tube stand</li> <li>• Unique C Arm supports tube at one end and receptor at other end / <b>Receptor on left is only configuration</b></li> <li>• Variable SID from 40" to 72"</li> <li>• Motorized movement for SID adjustment, vertical and receptor rotation</li> <li>• Digital indication at tube for arm angulation</li> <li>• Reciprocating Bucky</li> <li>• Manual cassette tray</li> <li>• 103 line, 10:1 ratio, 40" to 72" focal range grid</li> </ul>
<b>E7242X</b>	<b>X-Ray Tube</b> 200,000 heat unit, 0.6-1.5mm focal spots, 270° horn angle
<b>SCOL-225ETBLL</b>	<b>Collimator</b> – Certified manual collimator with LED, laser light, swivel mount
<b>HT9M/FC9M</b>	<b>Cables</b> – pair – 29' long with vinyl cable wrap



# URS-T LP Options

CAT NO.	DESCRIPTION
---------	-------------

**Generator Options:**

PD	Pedestal for control console, replaces table mount
CTSC	Touch screen console
AEC-ADAPTA	Automatic Exposure Control includes electronics and interconnect cable (ion chamber below)
HSS-1T	High speed starter, 1 tube (for SHF410 and SHF510 generators)
SHF 3PH-220	3-phase, 220 VAC generator, in place of 1-phase
SHF 3PH-380	3-phase, 380 VAC generator, in place of 1-phase
SHF 3PH-480	3-phase, 480 VAC generator, in place of 1-phase
VAD-2004-EX	External Dose Area Product (DAP) Meter, for analog systems
VAD-2004-INT	Integrated Dose Area Product (DAP) Meter with 15m cable, for systems With touch screen console, or for digital systems
PAD-2004-Z	Data Printer for DAP Meter with roll of 2100 labels, 57x32 (2.24x1.26")

**Stand Options:**

ICX-162	Ion Chamber with interconnect cable, Left Hand Load
1011784072	178 line, 10:1 ratio grid, replaces 103 line
IP-BARRIER	Vertical Patient Stand for Stitching

**Table Additions:**

SEMER-001	Stretcher Table, Laminate Top • 78.74" x 25.59" x 27.55" with locking casters on front wheel • Weight: 101.1 pounds
SEMER-002	Stretcher Table, Carbon Fiber Top • 86.61" x 25.59" x 27.55" with locking casters on front wheel • Weight: 66.1 pounds
FLEXI-DTE	Mobile, Elevating, four way float top table, laminate top • Battery Operated, allows full day use on charge • 95.9" x 25.6" laminated top, 550 pound weight capacity • Travel: 38.6" Longitudinal, 8.2" Transverse, 15.8" Vertical • Minimum table height 23.6"; Maximum table height 39.4" • Anti Collision Protection, Electromagnetic Brakes • Foot Lever Positive Wheel Lock
FLEXI-DTEC	Specs same as above, but with Carbon Fiber top

**Tube Options:**

E7884X	300,000 H.U., 150 kVp, 0.6-1.2mm, in place of E7242X
E7252X	300,000 H.U., 150 kVp, 0.6-1.2mm HSS, in place of E7884X
E7254X	400,000 H.U., 150 kVp, 0.6-1.2mm HSS, in place of E7252X
E7869X	600,000 H.U., 150 kVp, 0.6-1.2mm HSS, in place of E7254X

**Collimator Options:**

SCOL-225MAUTL	Automatic collimator and 1 size sensing tray, replaces manual collimator
---------------	--

# Configuration URS-T LP *Plus* Universal Radiographic System

<u>System #</u>	<u>URS-T LP <i>Plus</i> Universal Radiographic System</u>
ULPP-SHF410AP-TS	40kW, 500mA, 125kVp, 1-phase, 220/240VAC, E7242 200kHU Tube
ULPP-SHF510AP-TS	50kW, 640mA, 125kVp, 1-phase, 220/240VAC, E7884 300kHU Tube
ULPP-SHF645AP-TS	64kW, 640mA, 150kVp, 3-phase, 380/480VAC, HSS, E7252 300kHU Tube
ULPP-SHF845AP-TS	80kW, 800mA, 150kVp, 3-phase, 380/480VAC, HSS, E7254 400kHU Tube

*HF generators supplied with APR, table mount, hand switch and TOUCH SCREEN control console, See options for 3-phase upgrades on SHF410 and SHF510 generators.*

<u>CAT NO.</u>	<u>DESCRIPTION</u>
SEU-PLUS+	<p><b>Universal Radiographic Stand - Fully Motorized with Auto Positioning</b></p> <ul style="list-style-type: none"> <li>Floor to wall mounted tube stand</li> <li>Unique C Arm supports tube at one end and receptor at other end / <b>Receptor on left is only configuration</b></li> <li>Variable SID from 40" to 72"</li> <li>Motorized movement for SID adjustment, vertical and receptor rotation</li> <li>Auto-Positioning</li> <li>Touch Pad controls at receptor to operate all movements</li> <li>Digital indication at tube for arm angulation</li> <li>10" touch screen control console allows:               <ul style="list-style-type: none"> <li>View selection</li> <li>Automatic positioning of structure to selected view</li> <li>Review patient positioning for selected view (guide)</li> <li>Adjust preprogrammed techniques</li> </ul> </li> <li>Reciprocating Bucky</li> <li>Manual cassette tray</li> <li>103 line, 10:1 ratio, 40" to 72" focal range grid</li> </ul>
E7242X	<b>X-Ray Tube</b> – 200,000 heat unit, 0.6-1.5mm focal spots, 270° horn angle
SCOL-225ETBLL	<b>Collimator</b> – Certified manual collimator with LED, laser light, swivel mount
HT9M/FC9M	<b>Cables</b> – pair – 29' long with vinyl cable wrap



# URS-T LP *Plus* Options

CAT NO.	DESCRIPTION
---------	-------------

**Generator Options:**

PD	Pedestal for control console, replaces table mount
AEC-ADAPTA	Automatic Exposure Control includes electronics and interconnect cable (ion chamber below)
HSS-1T	High speed starter, 1 tube (for SHF410 and SHF510 generators)
SHF 3PH-220	3-phase, 220 VAC generator, in place of 1-phase
SHF 3PH-380	3-phase, 380 VAC generator, in place of 1-phase
SHF 3PH-480	3-phase, 480 VAC generator, in place of 1-phase
VAD-2004-EX	External Dose Area Product (DAP) Meter, for analog systems
VAD-2004-INT	Integrated Dose Area Product (DAP) Meter with 15m cable, for systems With touch screen console, or for digital systems
PAD-2004-Z	Data Printer for DAP Meter with roll of 2100 labels, 57x32 (2.24x1.26")

**Stand Options:**

ICX-162	Ion Chamber with interconnect cable, Left Hand Load
1011784072	178 line, 10:1 ratio grid, replaces 103 line
IRCLP	Infrared Remote Control
IP-BARRIER	Vertical Patient Stand for Stitching

**Table Additions:**

SEMER-001	Stretcher Table, Laminate Top <ul style="list-style-type: none"> <li>• 78.74" x 25.59" x 27.55" with locking casters on front wheel</li> <li>• Weight: 101.1 pounds</li> </ul>
SEMER-002	Stretcher Table, Carbon Fiber Top <ul style="list-style-type: none"> <li>• 86.61" x 25.59" x 27.55" with locking casters on front wheel</li> <li>• Weight: 66.1 pounds</li> </ul>
FLEXI-DTE	Mobile, Elevating, four way float top table, laminate top <ul style="list-style-type: none"> <li>• Battery Operated, allows full day use on charge</li> <li>• 95.9" x 25.6" laminated top, 550 pound weight capacity</li> <li>• Travel: 38.6" Longitudinal, 8.2" Transverse, 15.8" Vertical</li> <li>• Minimum table height 23.6"; Maximum table height 39.4"</li> <li>• Anti Collision Protection, Electromagnetic Brakes</li> <li>• Foot Lever Positive Wheel Lock</li> </ul>
FLEXI-DTEC	Specs same as above, but with Carbon Fiber top

**Tube Options:**

E7884X	300,000 H.U., 150 kVp, 0.6-1.2mm, in place of E7242X
E7252X	300,000 H.U., 150 kVp, 0.6-1.2mm HSS, in place of E7884X
E7254X	400,000 H.U., 150 kVp, 0.6-1.2mm HSS, in place of E7252X
E7869X	600,000 H.U., 150 kVp, 0.6-1.2mm HSS, in place of E7254X

**Collimator Options:**

SCOL-225MAUTL	Automatic collimator and 1 size sensing tray, replaces manual collimator
---------------	--

# Configuration ML1

## Elevating Table with Floor Mount Rotate Tube Stand with Digital Readout and Wall Stand

<b>System #</b>	<b>ML1-Elevating, Digital FMT System</b>
ML1-SHF310AP	32kW, 400mA, 125kVp, 1-phase, 220/240VAC, E7239 140kHU Tube
ML1-SHF410AP	40kW, 500mA, 125kVp, 1-phase, 220/240VAC, E7242 200kHU Tube
ML1-SHF510AP	50kW, 640mA, 125kVp, 1-phase, 220/240VAC, E7884 300kHU Tube
ML1-SHF645AP	64kW, 640mA, 150kVp, 3-phase, 380/480VAC, <b>HSS</b> , E7252 300kHU Tube
ML1-SHF845AP	80kW, 800mA, 150kVp, 3-phase, 380/480VAC, <b>HSS</b> , E7254 400kHU Tube

**HF generators supplied with APR, table mount and hand switch.  
See options for 3-phase upgrades on SHF410 and SHF510 generators**

<b>CAT NO.</b>	<b>DESCRIPTION</b>
<b>MILL-EL-B</b>	<b>Elevating, Four Way Float Top Table – 750 lb. Patient Load</b> <ul style="list-style-type: none"> <li>• 86.5" x 31.5" float table top</li> <li>• 43.3" longitudinal and 9.5" lateral table top travel</li> <li>• Collision protection</li> <li>• Super Speed Bucky</li> <li>• Heavy duty manual cassette tray</li> <li>• 103 line, 10:1 ratio, 34-44" focal range grid</li> </ul>
<b>MILL-FMTSAD</b>	<b>Floor Mount Rotate Tube Stand with Digital Readout</b> <ul style="list-style-type: none"> <li>• Longitudinal tube travel 200cm (78.74")</li> <li>• Transverse tube travel: 30cm (11.81")</li> <li>• Vertical tube travel: 162cm (63.78")</li> <li>• Focal spot to floor, variable from 40-202cm (15.75"-79.53")</li> <li>• X-Ray Tube Rotation <math>\pm 150^\circ</math></li> <li>• Tube Stand Column Rotation <math>\pm 180</math></li> <li>• Electromagnetic brakes</li> <li>• Tube arm console controls: longitudinal, transverse, vertical and rotational lock control buttons</li> <li>• Tube arm console displays: SID and tube angle around horizontal axis</li> <li>• 108.5" floor track, provides 78.74" travel</li> </ul>
<b>13-BF7-GC/S109</b>	<b>Wall Stand with 17 x 17" Grid Cabinet</b> <ul style="list-style-type: none"> <li>• Floor to Wall Mount, Counterbalanced Column</li> <li>• Minimum ceiling height: 86" from floor</li> <li>• Vertical Travel: 9-3/4" to 72-3/4"</li> <li>• Grid Cabinet with Heavy Duty Tray and 10:1, 103 line grid</li> <li>• Electric locks (24 VDC 2 Amp required) power supply included</li> <li>• Operates on 120 VAC</li> </ul>
<b>E7239FX</b>	<b>X-Ray Tube</b> – 140,000 heat unit, 1.0-2.0mm focal spots, 90° horn angle
<b>CML-125-0001-C</b>	<b>Collimator</b> – Certified Manual Collimator with laser light, LED, 125kVP
<b>10540-25</b>	<b>Cables</b> – pair, 25' long

# ML1 Options

CAT NO.	DESCRIPTION
---------	-------------

**Generator Options:**

PD	Pedestal for control console, replaces table mount
AEC-1C	Automatic Exposure Control with ADAPTA to accept up to three (3) Ion Chambers. Includes one ICX159 ion chamber with interconnect cable for table
HSS-1T	High speed starter, 1 tube (for SHF310, 410 and SHF510 generators)
SHF 3PH-220	3-phase, 220 VAC generator, in place of 1-phase
SHF 3PH-380	3-phase, 380 VAC generator, in place of 1-phase
SHF 3PH-480	3-phase, 480 VAC generator, in place of 1-phase

**Table Options:**

ZA0012	Handgrips
1011783444	10:1 ratio, 178 line grid for table, replaces 103 line

**Tube Stand Options:**

MILL-FMSTAD3M	147.8" floor rail, provides 118" (3m) travel
---------------	--

**Wall Stand Options:**

ICX-162	Ion Chamber with interconnect cable, Left Hand Load
ICX-192	Ion Chamber with interconnect cable, Right Hand Load
13-BF7-B/S109	Wall Stand with Bucky, replaces grid cabinet
1011784072	10:1 ratio, 178 line grid for wall stand, replaces 103 line
MILL-WBS-ADT	Millenium Wall Stand with Bucky, Tray and 10:1 grid
TRA001	Overhead Patient Hand Support (for MILL-WBS-ADT)
ZA0012B	Side Mounted Patient Hand grips (for MILL-WBS-ADT)

**Tube Options:**

E7884X	300,000 H.U., 150 kVp, 0.6-1.2mm, in place of E7242X
E7252X	300,000 H.U., 150 kVp, 0.6-1.2mm HSS, in place of E7884X
E7254X	400,000 H.U., 150 kVp, 0.6-1.2mm HSS, in place of E7252X
E7869X	600,000 H.U., 150 kVp, 0.6-1.2mm HSS, in place of E7254X

**Collimator Options:**

SCOL-225MAUTL	Automatic collimator and 2 size sensing trays, replaces manual collimator
---------------	---



# Configuration GP-3

## Elevating Table with Floor-to-Wall Rotate Tube Stand

<b>System #</b>	<b>GP-3 Elevating Table, F/W Rotate System</b>
GP3-SHF210AP	20kW, 320mA, APR, table mount & hand switch
GP3-SHF310AP	32kW, 400mA, APR, table mount & hand switch
GP3-SHF310APPSU	32kW Battery, 400mA, APR, table mount & hand switch
GP3-SHF410AP	40kW, 500mA, APR, table mount & hand switch

*HF generators priced for operation on 1-phase, 220/240VAC – see options for 3-phase power.*

<b>CAT NO.</b>	<b>DESCRIPTION</b>
<b>MILL-EL-B</b>	<b>Elevating, Four Way Float Top Table – 750 lb. Patient Load</b> <ul style="list-style-type: none"> <li>• 86.5" x 31.5" float table top</li> <li>• 43.3" longitudinal and 9.5" lateral table top travel</li> <li>• Vertical Travel 19.69" x 35.43"</li> <li>• Collision protection</li> <li>• Super Speed Bucky</li> <li>• Heavy duty manual cassette tray</li> <li>• 103 line, 10:1 ratio, 34-44" focal range grid</li> </ul>
<b>13-CSM/S225</b>	<b>Rotate Floor-to-Wall Tube Stand with Transverse Travel</b> <ul style="list-style-type: none"> <li>• +/-5" Transverse travel</li> <li>• 360° Column Rotation, mechanical detent</li> <li>• Vertical travel 13.5"-76.8"</li> <li>• 39.2" wall to focal spot at detent position</li> <li>• Platform tube mount</li> <li>• Angulation dial</li> <li>• Magnetic locks for longitudinal, transverse, vertical &amp; tube rotation</li> <li>• Fits in ceiling heights of 93"-120"</li> <li>• 75.7" Longitudinal Travel with 8' floor track</li> <li>• UL Classified, operates from 24 VDC</li> </ul>
<b>13-BF7-GC/S109</b>	<b>Wall Stand with 17 x 17" Grid Cabinet</b> <ul style="list-style-type: none"> <li>• Floor to Wall Mount, Counterbalanced Column</li> <li>• Minimum ceiling height: 86" from floor</li> <li>• Vertical Travel: 9-3/4" to 72-3/4"</li> <li>• Grid Cabinet with Heavy Duty Tray and 10:1, 103 line grid</li> <li>• Electric locks (24 VDC 2 Amp required) power supply included</li> <li>• Operates on 120 VAC</li> </ul>
<b>E7239FX</b>	<b>X-Ray Tube</b> – 140,000 heat unit, 1.0-2.0mm focal spots, 90° horn angle
<b>CML-125-0001-C</b>	<b>Collimator</b> – Certified Manual Collimator with laser light, LED, 125kVP
<b>10540-25</b>	<b>Cables</b> – pair, 25' long

# GP-3 Options

<b>CAT NO.</b>	<b>DESCRIPTION</b>
----------------	--------------------

**Generator Options:**

PD	Pedestal for control console, replaces table mount
AEC-1C	Automatic Exposure Control with ADAPTA to accept up to three (3) Ion Chambers. Includes one ICX159 ion chamber with interconnect cable for table
SHF 3PH-220	3-phase, 220 VAC generator, in place of 1-phase
SHF 3PH-380	3-phase, 380 VAC generator, in place of 1-phase
SHF 3PH-480	3-phase, 480 VAC generator, in place of 1-phase

**Table Options:**

1011783444	10:1, 178 line grid, replaces 10:1, 103 line grid
ZA0012	Hand Grips

**Wall Stand Options:**

ICX-162	Ion Chamber with interconnect cable, Left hand load
ICX-192	Ion Chamber with interconnect cable, Right hand load
1011784072	10:1, 178 line grid, replaces 10:1, 103 line grid
13-BF7-B/S109	Wall Stand with Bucky, replaces grid cabinet
13-BF7T-GC/S102	Wall Stand with Tilt mechanism +90°/-45°

**Tube Options:**

E7239GX	140,000 H.U., 1.0-2.0mm, 180°, replaces E7239FX
E7242FX	200,000 H.U., 0.6-1.5mm, 90°, replaces E7239FX
E7242X	200,000 H.U., 0.6-1.5mm, 270°, replaces E7239FX
E7884X	300,000 H.U. 0.6-1.2mm, 270°, replaces E7239FX

# Configuration GP-4

## Elevating Table with Floor-to-Wall Non-Rotate Tube Stand

<u>System #</u>	<u>GP-4 Elevating Table, F/W Non-Rotate System</u>
GP4-SHF210AP	20kW, 320mA, APR, table mount & hand switch
GP4-SHF310AP	32kW, 400mA, APR, table mount & hand switch
GP4-SHF310APPSU	32kW Battery, 400mA, APR, table mount & hand switch
GP4-SHF410AP	40kW, 500mA, APR, table mount & hand switch

*HF generators priced for operation on 1-phase, 220/240VAC – see options for 3-phase power.*

<u>CAT NO.</u>	<u>DESCRIPTION</u>
MILL-EL-B	<b>Elevating, Four Way Float Top Table – 750 lb. Patient Load</b> <ul style="list-style-type: none"> <li>• 86.5" x 31.5" float table top</li> <li>• 43.3" longitudinal and 9.5" lateral table top travel</li> <li>• Vertical Travel 19.69" x 35.43"</li> <li>• Collision protection</li> <li>• Super Speed Bucky</li> <li>• Heavy duty manual cassette tray</li> <li>• 103 line, 10:1 ratio, 34-44" focal range grid</li> </ul>
13-RA-23/S105-8	<b>Floor-to-Wall Non-Rotate Tube Stand</b> <ul style="list-style-type: none"> <li>• Vertical travel 11.75" – 76.75"</li> <li>• 23" focal spot to front of column</li> <li>• Platform tube mount, angulation dial and operator handles</li> <li>• Manual lock for tube angulation</li> <li>• Electric lock for longitudinal and vertical travel</li> <li>• Fits in ceiling heights of 88"-121"</li> <li>• 75.2" Longitudinal travel with 8' floor track</li> <li>• UL Classified, operates from 24 VDC</li> </ul>
13-BF7-GC/S109	<b>Wall Stand with 17 x 17" Grid Cabinet</b> <ul style="list-style-type: none"> <li>• Floor to Wall Mount, Counterbalanced Column</li> <li>• Minimum ceiling height: 86" from floor</li> <li>• Vertical Travel: 9-3/4" to 72-3/4"</li> <li>• Grid Cabinet with Heavy Duty Tray and 10:1, 103 line grid</li> <li>• Electric locks (24 VDC 2 Amp required) power supply included</li> <li>• Operates on 120 VAC</li> </ul>
E7239FX	<b>X-Ray Tube</b> – 140,000 heat unit, 1.0-2.0mm focal spots, 90° horn angle
CML-125-0001-C	<b>Collimator</b> – Certified Manual Collimator with laser light, LED, 125kVP
10540-25	<b>Cables</b> – pair, 25' long

# GP-4 Options

<b>CAT NO.</b>	<b>DESCRIPTION</b>
----------------	--------------------

**Generator Options:**

PD	Pedestal for control console, replaces table mount
AEC-1C	Automatic Exposure Control with ADAPTA to accept up to three (3) Ion Chambers. Includes one ICX159 ion chamber with interconnect cable for table
SHF 3PH-220	3-phase, 220 VAC generator, in place of 1-phase
SHF 3PH-380	3-phase, 380 VAC generator, in place of 1-phase
SHF 3PH-480	3-phase, 480 VAC generator, in place of 1-phase

**Table Options:**

1011783444 ZA0012	10:1, 178 line grid, replaces 10:1, 103 line grid Hand Grips
----------------------	---

**Tube Stand Options:**

02267-002 13-CT/S114	10 foot track provides 99.2" longitudinal travel Floor to wall mounted tube stand with transverse arm
-------------------------	--

**Wall Stand Options:**

ICX-162	Ion Chamber with interconnect cable, Left hand load
ICX-192	Ion Chamber with interconnect cable, Right hand load
1011784072	10:1, 178 line grid, replaces 10:1, 103 line grid
13-BF7-B/S109	Wall Stand with Bucky, replaces grid cabinet
13-BF7T-GC/S102	Wall Stand with Tilt mechanism +90°/-45°

**Tube Options:**

E7239GX	140,000 H.U., 1.0-2.0mm, 180°, replaces E7239FX
E7242FX	200,000 H.U., 0.6-1.5mm, 90°, replaces E7239FX
E7242X	200,000 H.U., 0.6-1.5mm, 270°, replaces E7239FX
E7884X	300,000 H.U. 0.6-1.2mm, 270°, replaces E7239FX

# Configuration GP-5

## 4 Way Float Top Table with Floor-to-Wall Rotate Tube Stand

<u>System #</u>	<u>GP-5 4 Way Float Top Table, F/W Rotate System</u>
GP5-SHF210AP	20kW, 320mA, APR, table mount & hand switch
GP5-SHF310AP	32kW, 400mA, APR, table mount & hand switch
GP5-SHF310APPSU	32kW Battery, 400mA, APR, table mount & hand switch
GP5-SHF410AP	40kW, 500mA, APR, table mount & hand switch

*HF generators priced for operation on 1-phase, 220/240VAC – see options for 3-phase power.*

<u>CAT NO.</u>	<u>DESCRIPTION</u>
----------------	--------------------

<b>MULTI-FWFTT-G</b>	<b>Four Way Float Top Table, Fixed Height, Multirad</b> <ul style="list-style-type: none"> <li>• 86.6" x 32.4" float top table (2200mm x 825mm)</li> <li>• Table top supports patients up to 661 lbs (300 kgs)</li> <li>• Longitudinal table top travel 35" (+/-17.5") (900mm)</li> <li>• Transverse table top travel 9" (+/-4.5") (230mm)</li> <li>• Table top to Film Distance: 4" (102mm)</li> <li>• Bucky travel: 20.3" (581mm)</li> <li>• Table top to floor distance 30.3" (769mm)</li> <li>• Electromagnetic brakes</li> <li>• Heavy duty grid cabinet with heavy duty manual cassette tray</li> <li>• 103 line, 10:1 ratio, 34-44" focal range grid</li> </ul>
<b>13-CSM/S225</b>	<b>Rotate Floor-to-Wall Tube Stand with Transverse Travel</b> <ul style="list-style-type: none"> <li>• +/-5" Transverse travel</li> <li>• 360° Column Rotation, mechanical detent</li> <li>• Vertical travel 13.5"-76.8"</li> <li>• 39.2" wall to focal spot at detent position</li> <li>• Platform tube mount</li> <li>• Angulation dial</li> <li>• Magnetic locks for longitudinal, transverse, vertical &amp; tube rotation</li> <li>• Fits in ceiling heights of 93"-120"</li> <li>• 75.7" Longitudinal Travel with 8' floor track</li> <li>• UL Classified, operates from 24 VDC</li> </ul>
<b>13-BF7-GC/S109</b>	<b>Wall Stand with 17 x 17" Grid Cabinet</b> <ul style="list-style-type: none"> <li>• Floor to Wall Mount, Counterbalanced Column</li> <li>• Minimum ceiling height: 86" from floor</li> <li>• Vertical Travel: 9-3/4" to 72-3/4"</li> <li>• Grid Cabinet with Heavy Duty Tray and 10:1, 103 line grid</li> <li>• Electric locks (24 VDC 2 Amp required) power supply included</li> <li>• Operates on 120 VAC</li> </ul>
<b>E7239FX</b>	<b>X-Ray Tube</b> – 140,000 heat unit, 1.0-2.0mm focal spots, 90° horn angle
<b>CML-125-0001-C</b>	<b>Collimator</b> – Certified Manual Collimator with laser light, LED, 125kVP
<b>10540-25</b>	<b>Cables</b> – pair, 25' long

# GP-5 Options

<b>CAT NO.</b>	<b>DESCRIPTION</b>
----------------	--------------------

**Generator Options:**

PD	Pedestal for control console, replaces table mount
AEC-1C	Automatic Exposure Control with ADAPTA to accept up to three (3) Ion Chambers. Includes one ICX159 ion chamber with interconnect cable for table
SHF 3PH-220	3-phase, 220 VAC generator, in place of 1-phase
SHF 3PH-380	3-phase, 380 VAC generator, in place of 1-phase
SHF 3PH-480	3-phase, 480 VAC generator, in place of 1-phase

**Table Options:**

MULTI-FWFTT-B 1011783444	Super Speed Bucky, replaces grid cabinet 10:1, 178 line grid, replaces 10:1, 103 line grid
-----------------------------	---

**Wall Stand Options:**

ICX-162	Ion Chamber with interconnect cable, Left hand load
ICX-192	Ion Chamber with interconnect cable, Right hand load
1011784072	10:1, 178 line grid, replaces 10:1, 103 line grid
13-BF7-B/S109	Wall Stand with Bucky, replaces grid cabinet
13-BF7T-GC/S102	Wall Stand with Tilt mechanism +90°/-45°

**Tube Options:**

E7239GX	140,000 H.U., 1.0-2.0mm, 180°, replaces E7239FX
E7242FX	200,000 H.U., 0.6-1.5mm, 90°, replaces E7239FX
E7242X	200,000 H.U., 0.6-1.5mm, 270°, replaces E7239FX
E7884X	300,000 H.U. 0.6-1.2mm, 270°, replaces E7239FX

# Configuration GP-6

## 4 Way Float Top Table with Floor-to-Wall Non-Rotate Tube Stand

<u>System #</u>	<u>GP-6 4 Way Float Top Table, F/W Non-Rotate System</u>
GP6-SHF210AP	20kW, 320mA, APR, table mount & hand switch
GP6-SHF310AP	32kW, 400mA, APR, table mount & hand switch
GP6-SHF310APPSU	32kW Battery, 400mA, APR, table mount & hand switch
GP6-SHF410AP	40kW, 500mA, APR, table mount & hand switch
<i>HF generators priced for operation on 1-phase, 220/240VAC – see options for 3-phase power.</i>	

<u>CAT NO.</u>	<u>DESCRIPTION</u>
<b>MULTI-FWFTT-G</b>	<b>Four Way Float Top Table, Fixed Height, Multirad</b> <ul style="list-style-type: none"> <li>• 86.6" x 32.4" float top table (2200mm x 825mm)</li> <li>• Table top supports patients up to 661 lbs (300 kgs)</li> <li>• Longitudinal table top travel 35" (+/-17.5") (900mm)</li> <li>• Transverse table top travel 9" (+/-4.5") (230mm)</li> <li>• Table top to Film Distance: 4" (102mm)</li> <li>• Bucky travel: 20.3" (581mm)</li> <li>• Table top to floor distance 30.3" (769mm)</li> <li>• Electromagnetic brakes</li> <li>• Heavy duty grid cabinet with heavy duty manual cassette tray</li> <li>• 103 line, 10:1 ratio, 34-44" focal range grid</li> </ul>
<b>13-RA-23/S105-8</b>	<b>Floor-to-Wall Non-Rotate Tube Stand</b> <ul style="list-style-type: none"> <li>• Vertical travel 11.75" – 76.75"</li> <li>• 23" focal spot to front of column</li> <li>• Platform tube mount, angulation dial and operator handles</li> <li>• Manual lock for tube angulation</li> <li>• Electric lock for longitudinal and vertical travel</li> <li>• Fits in ceiling heights of 88"-121"</li> <li>• 75.2" Longitudinal travel with 8' floor track</li> <li>• UL Classified, operates from 24 VDC</li> </ul>
<b>13-BF7-GC/S109</b>	<b>Wall Stand with 17 x 17" Grid Cabinet</b> <ul style="list-style-type: none"> <li>• Floor to Wall Mount, Counterbalanced Column</li> <li>• Minimum ceiling height: 86" from floor</li> <li>• Vertical Travel: 9-3/4" to 72-3/4"</li> <li>• Grid Cabinet with Heavy Duty Tray and 10:1, 103 line grid</li> <li>• Electric locks (24 VDC 2 Amp required) power supply included</li> <li>• Operates on 120 VAC</li> </ul>
<b>E7239FX</b>	<b>X-Ray Tube</b> – 140,000 heat unit, 1.0-2.0mm focal spots, 90° horn angle
<b>CML-125-0001-C</b>	<b>Collimator</b> – Certified Manual Collimator with laser light, LED, 125kVP
<b>10539-20</b>	<b>Cables</b> – pair, 20' long

# GP-6 Options

<b>CAT NO.</b>	<b>DESCRIPTION</b>
----------------	--------------------

**Generator Options:**

PD	Pedestal for control console, replaces table mount
AEC-1C	Automatic Exposure Control with ADAPTA to accept up to three (3) Ion Chambers. Includes one ICX159 ion chamber with interconnect cable for table
SHF 3PH-220	3-phase, 220 VAC generator, in place of 1-phase
SHF 3PH-380	3-phase, 380 VAC generator, in place of 1-phase
SHF 3PH-480	3-phase, 480 VAC generator, in place of 1-phase

**Table Options:**

MULTI-FWFTT-B 1011783444	Super Speed Bucky, replaces grid cabinet 10:1, 178 line grid, replaces 10:1, 103 line grid
-----------------------------	---

**Tube Stand Options:**

02267-002 13-CT/S114	10 foot track provides 99.2" longitudinal travel Floor to wall mounted tube stand with transverse arm
-------------------------	--

**Wall Stand Options:**

ICX-162	Ion Chamber with interconnect cable, Left hand load
ICX-192	Ion Chamber with interconnect cable, Right hand load
1011784072	10:1, 178 line grid, replaces 10:1, 103 line grid
13-BF7-B/S109	Wall Stand with Bucky, replaces grid cabinet
13-BF7T-GC/S102	Wall Stand with Tilt mechanism +90°/-45°

**Tube Options:**

E7239GX	140,000 H.U., 1.0-2.0mm, 180°, replaces E7239FX
E7242FX	200,000 H.U., 0.6-1.5mm, 90°, replaces E7239FX
E7242X	200,000 H.U., 0.6-1.5mm, 270°, replaces E7239FX
E7884X	300,000 H.U. 0.6-1.2mm, 270°, replaces E7239FX



# Configuration GP-7

## Stationary Top Table with Floor-to-Wall Non-Rotate Tube Stand

<u>System #</u>	<u>GP-7 Stationary Table, F/W Non-Rotate System</u>
GP7-SHF210AP	20kW, 320mA, APR, table mount & hand switch
GP7-SHF310AP	32kW, 400mA, APR, table mount & hand switch
GP7-SHF310APPSU	32kW Battery, 400mA, APR, table mount & hand switch
GP7-SHF410AP	40kW, 500mA, APR, table mount & hand switch

*HF generators priced for operation on 1-phase, 220/240VAC – see options for 3-phase power.*

<u>CAT NO.</u>	<u>DESCRIPTION</u>
13-FBT	<b>Stationary Top Table – 325 lb. Patient Load</b> <ul style="list-style-type: none"> <li>• 72" x 27.5" stationary top table</li> <li>• Heavy duty grid cabinet</li> <li>• Heavy duty manual cassette tray</li> <li>• 103 line, 10:1 ratio, 34-44" focal range grid</li> </ul>
13-RA-23/S105-8	<b>Floor-to-Wall Non-Rotate Tube Stand</b> <ul style="list-style-type: none"> <li>• Vertical travel 11.75" – 76.75"</li> <li>• 23" focal spot to front of column</li> <li>• Platform tube mount, angulation dial and operator handles</li> <li>• Manual lock for tube angulation</li> <li>• Electric lock for longitudinal and vertical travel</li> <li>• Fits in ceiling heights of 88"-121"</li> <li>• 75.2" Longitudinal travel with 8' floor track</li> <li>• UL Classified, operates from 24 VDC</li> </ul>
13-BF7-GC/S109	<b>Wall Stand with 17 x 17" Grid Cabinet</b> <ul style="list-style-type: none"> <li>• Floor to Wall Mount, Counterbalanced Column</li> <li>• Minimum ceiling height: 86" from floor</li> <li>• Vertical Travel: 9-3/4" to 72-3/4"</li> <li>• Grid Cabinet with Heavy Duty Tray and 10:1, 103 line grid</li> <li>• Electric locks (24 VDC 2 Amp required) power supply included</li> <li>• Operates on 120 VAC</li> </ul>
E7239FX	<b>X-Ray Tube</b> – 140,000 heat unit, 1.0-2.0mm focal spots, 90° horn angle
CML-125-0001-C	<b>Collimator</b> – Certified Manual Collimator with laser light, LED, 125kVP
10538-15	<b>Cables</b> – pair, 15' long

# GP-7 Options

CAT NO.	DESCRIPTION
---------	-------------

**Generator Options:**

PD AEC-1C	Pedestal for control console, replaces table mount Automatic Exposure Control with ADAPTA to accept up to three (3) Ion Chambers. Includes one ICX159 ion chamber with interconnect cable for table
SHF 3PH-220	3-phase, 220 VAC generator, in place of 1-phase
SHF 3PH-380	3-phase, 380 VAC generator, in place of 1-phase
SHF 3PH-480	3-phase, 480 VAC generator, in place of 1-phase

**Table Options:**

MULTI-FWFTT-B 1011783444	Super Speed Bucky, replaces grid cabinet 10:1, 178 line grid, replaces 10:1, 103 line grid
-----------------------------	---

**Tube Stand Options:**

02267-002 13-CT/S114	10 foot track provides 99.2" longitudinal travel Floor to wall mounted tube stand with transverse arm
-------------------------	--

**Wall Stand Options:**

ICX-162	Ion Chamber with interconnect cable, Left hand load
ICX-192	Ion Chamber with interconnect cable, Right hand load
1011784072	10:1, 178 line grid, replaces 10:1, 103 line grid
13-BF7-B/S109	Wall Stand with Bucky, replaces grid cabinet
13-BF7T-GC/S102	Wall Stand with Tilt mechanism +90°/-45°

**Tube Options:**

E7239GX	140,000 H.U., 1.0-2.0mm, 180°, replaces E7239FX
E7242FX	200,000 H.U., 0.6-1.5mm, 90°, replaces E7239FX
E7242X	200,000 H.U., 0.6-1.5mm, 270°, replaces E7239FX
E7884X	300,000 H.U. 0.6-1.2mm, 270°, replaces E7239FX

# Configuration GP-9

## VertEx Tilting Upright and Extremity System

<u>System #</u>	<u>GP-9 Upright System</u>
GP9-SHF210AP	20kW, 320mA, APR, table mount & hand switch
GP9-SHF310AP	32kW, 400mA, APR, table mount & hand switch
GP9-SHF310APPSU	32kW Battery, 400mA, APR, table mount & hand switch
GP9-SHF410AP	40kW, 500mA, APR, table mount & hand switch

***HF generators priced for operation on 1-phase, 220/240VAC – see options for 3-phase power.***

<u>CAT NO.</u>	<u>DESCRIPTION</u>
----------------	--------------------

<b>13-RA-23/S105-8</b>	<b>Floor-to-Wall Non-Rotate Tube Stand</b> <ul style="list-style-type: none"> <li>• Vertical travel 11.75" – 76.75"</li> <li>• 23" focal spot to front of column</li> <li>• Platform tube mount, angulation dial and operator handles</li> <li>• Manual lock for tube angulation</li> <li>• Electric lock for longitudinal and vertical travel</li> <li>• Fits in ceiling heights of 88"-121"</li> <li>• 75.2" Longitudinal travel with 8' floor track</li> <li>• UL Classified, operates from 24 VDC</li> </ul>
<b>13-BF7T-GC/S102</b>	<b>Wall Stand with Tilt, 17 x 17" Grid Cabinet</b> <ul style="list-style-type: none"> <li>• Tilt wall stand features electric vertical lock and Mechanical tilt lock; RH load standard</li> <li>• Vertical travel: 15.5" – 79"</li> <li>• Tilt mechanism +90° / -45°; See Inverted Tilt Option</li> <li>• Grid Cabinet with Heavy Duty Tray and 10:1, 103 line grid</li> <li>• Electric locks (24 VDC 2 Amp required) power supply included</li> <li>• Operates on 120 VAC</li> </ul>
<b>E7239GX</b>	<b>X-Ray Tube</b> – 140,000 heat unit, 1.0-2.0mm focal spots, 180° horn angle
<b>CML-125-0001-C</b>	<b>Collimator</b> – Certified Manual Collimator with laser light, LED, 125kVP
<b>10540-25</b>	<b>Cables</b> – pair, 25' long

\*\* In order to obtain 72" to both to the wall receptor and center to horizontal wall receptor, exact placement of 8' rail is required \*\*  
 Longer rail available, see options next page.

# GP-9 Options

CAT NO.	DESCRIPTION
---------	-------------

**Generator Options:**

PD AEC-HF-1C-A	Pedestal for control console, replaces table mount Automatic Exposure Control, includes electronics, one (1) three field ion chamber and interconnect cable. Specify ICX 162 for Left hand or ICX 192 for Right hand
SHF 3PH-220	3-phase, 220 VAC generator, in place of 1-phase
SHF 3PH-380	3-phase, 380 VAC generator, in place of 1-phase
SHF 3PH-480	3-phase, 480 VAC generator, in place of 1-phase

**Tube Stand Options:**

02267-002	10 foot track provides 99.2" longitudinal travel
-----------	--

**Wall Stand Options:**

1011784072	10:1, 178 line grid, replaces 10:1, 103 line grid
13-BF7/ITGC/S102	Wall stand, <b><i>Inverted Tilt</i></b> +45° -70°

**Tube Options:**

E7239FX	140,000 H.U., 1.0-2.0mm, 90°, replaces E7239GX
E7242FX	200,000 H.U., 0.6-1.5mm, 90°, replaces E7239GX
E7242GX	200,000 H.U., 0.6-1.5mm, 180°, replaces E7239GX
E7884X	300,000 H.U. 0.6-1.2mm, 270°, replaces E7239GX

# Configuration GP-10

## 4.0 kW Portable System for Human Application

<b>System #</b>	<b>GP-10 Portable System with Stand, 4.0kW</b>
SPSL-HF-4.0-AP6	100 mA, 125 kVp, H.F. Portable System with APR

**CAT NO.                      DESCRIPTION**

- SPSL-HF-4.0-AP6**      **Portable System** with Stand, 4.0kW, 6 APR
- 4.0 kW, 100 mA, 125 kVp
  - High Frequency Ripple: 300 kHz
  - 40 to 125 kVp in 1 kVp steps
  - Touch Screen
  - Allows customization of 6 APR regions (skull, thorax, spine, abdomen/pelvis, lower and upper extremities) - small, medium, large and pediatric patient sizes
  - User friendly multi-language selection
  - 14 mA stations: 5, 6.4, 8, 10, 12.5, 16, 20, 25, 32, 40, 50, 64, 80 and 100
  - 0.001-10 second exposure time range, 41 total in 25% steps
  - 0.1 to 250 mAs, 34 total in 25% steps
  - **Tube:** 0.5mm - 1.8mm stationary anode x-ray tube, 47215 kHU
  - **Power Cord:** 19.7' long (6 meters)
  - **Exposure Cord:** 9.8' long (3 meters)
  - **Collimator:** Certified manual, LED display
  - **Stand** on base with wheels for easy maneuverability
  - Gas spring arm supports tube to accommodate easy positioning
  - Positive mechanical brakes
  - Cassette storage box accommodates up to 8 cassettes
  - Vertical tube travel, 61.4" (17.3"-78.7")
  - 102.5 lbs total weight
  - Single-phase line Automatic Regulation, Automatic Output Power Adaptation to Power Line Conditions
  - 110 / 240 VAC - requires solid 20 amp breaker on 110V line for full power (can be de-rated)
- SPSL-HF4.0-AP1**      **Portable System** with Stand, 4.0kW, 1 APR  
(supplied with standard membrane APR console)  
Specs same as above, except supplied with 1 APR



Touch Screen



Membrane Console

# Configuration GP-11

## 8.0 kW Portable System for Human Application

**System #**                      **GP-11 Portable System with Stand, 8.0kW**

SPSL-HF-8.0-AP6      100 mA, 125 kVp, H.F. Portable System with APR

**CAT NO.**                      **DESCRIPTION**

**SPSL-HF-8.0-AP6**      **Portable System** with Stand, 8.0kW, 6 APR

- 8.0 kW, 100 mA, 125 kVp
- High Frequency Ripple: 300 kHz
- 40 to 125 kVp in 1 kVp steps
- Touch Screen
- Allows customization of 6 APR regions (skull, thorax, spine, abdomen/pelvis, lower and upper extremities) - small, medium, large and pediatric patient sizes
- User friendly multi-language selection
- 14 mA stations: 5, 6.4, 8, 10, 12.5, 16, 20, 25, 32, 40, 50, 64, 80 and 100
- 0.001-10 second exposure time range, 41 total in 25% steps
- 0.1 to 250 mAs, 34 total in 25% steps
- **Tube:** 0.6mm x 2.8mm dual focus stationary anode tube, 76,000 HU
- **Angulation Dial**
- **Power Cord:** 19.7' long (6 meters)
- **Exposure Cord:** 9.8' long (3 meters)
- **Collimator:** Certified manual, **Laser light**
- **Stand** on base with wheels for easy maneuverability
- Gas spring arm supports tube to accommodate easy positioning
- Positive mechanical brakes
- Cassette storage box accommodates up to 8 cassettes
- Vertical tube travel, 62" (16.7"-78.7")
- 102.5 lbs total weight
- Single-phase line Automatic Regulation, Automatic Output  
Power Adaptation to Power Line Conditions
- **220 / 240 VAC REQUIRED**

**SPSL-HF-8.0-AP1**      **Portable System** with Stand, 8.0kW, 1 APR  
(supplied with standard membrane APR console)  
Specs same as above, except supplied with 1 APR



Touch Screen




Membrane Console



# Configuration GP-10-LP

## Portable System with Toshiba DR Panel and Laptop Computer

<b>System #</b> SPSL4HC	<b>GP-10-DR Portable DR System with Stand</b> 100 mA, High Frequency, Digital Portable System
----------------------------	--

<b>CAT NO.</b>	<b>DESCRIPTION</b>
SPSL4HC	<p><b>Dragon Portable System, 4.0 kW Lightweight with Toshiba DR Flat Panel</b></p> <ul style="list-style-type: none"> <li>40 to 125 kVp in 1 kVp steps               <ul style="list-style-type: none"> <li>125 kVp @ 32 mA, 100 kVp @ 40 mA, 50 kVp @ 80 mA, 40 kVp @ 100 mA</li> </ul> </li> <li>14 mA Stations: 5, 6, 8, 10, 12.5, 16, 20, 25, 32, 40, 50, 64, 80 &amp; 100</li> <li>0.001 – 10 Second exposure time range, 0.1-250 mAs</li> <li>Allows customization of 6 APR regions (skull, thorax, spine, abdomen/pelvis, lower and upper extremities) - small, medium, large and pediatric patient sizes</li> <li>0.5mm - 1.8mm stationary anode x-ray tube, 47215 kHU</li> <li>Line Voltage: 110/220 VAC</li> <li>Generator integration with touch screen operator console</li> <li>Power Cord 20 feet long, Exposure Cord 10 feet long</li> <li>Stand on base with mechanical brakes on rear wheels</li> <li>Front steering wheels and rear main transport wheels</li> <li>17.5" to 78.7" Vertical tube travel (44.5cm – 200cm)</li> <li>Certified manual collimator with centering light and SID measuring tape</li> <li>147.7 pound total weight</li> </ul>
FDX3543RP	<p><b>Toshiba 14"x17" Tethered DR Panel</b></p> <ul style="list-style-type: none"> <li>Active area 350 (H) x 43 (V)mm (14x17")</li> <li>Cesium Iodide (CsI) with Amorphous Silicon (a-Si) photodiode</li> <li>2448 (H) x 2984 (V) Pixel Matrix; 143 micron Pixel Pitch</li> <li>Short Cycle Time: Shot to Shot 6 sec.</li> <li>Limiting Resolution: 3.7 lp/mm typical</li> <li>MTF (2.0Lp/mm, 70kVp, 1x1) 36% typical; DQE &gt;70%</li> <li>16 bit A/D conversion; Energy Range: 40-150kVp</li> <li>4 mR / frame maximum entrance dose</li> <li>Power Supply Unit: 115mm x 185mm x 85mm, 2.2 pounds (1kg) Input: AC 100 to 240V, 50/60 Hz / Output: DC 24 V 1.3A 60W</li> <li>Sensor weight: 6.6 pounds (3kg)</li> </ul> 
DROC-P	<p><b>ImagePlus Digital Acquisition System</b></p> <ul style="list-style-type: none"> <li>Symphony Image Processing Software to improve image contrast, adjust dynamic range, enhance details and reduce noise, to produce the highest quality images</li> <li>Generator Integration with touch screen operator console</li> <li>Anatomical Programming (APR)</li> <li>Image Management (PACS, HIS/RIS)</li> <li>DICOM communication, full DICOM 3.0 Compatibility, DICOM worklist from HIS/RIS, store images through PACS network system, DICOM image print, DICOM MPPS Medical Grade PSU-ATX (180W) Computer, Intel Core2 Duo T7500 2.2GHz CPU with Windows</li> <li><b>Laptop:</b> Intel Core i5-3210M processor (2.50 GHz, 3 MB L3 cache 35W, 2 cores)</li> <li>4 GB, 1 Dimm Memory, 500 GB, 7200 rpm Hard Drive</li> <li>DVD +/- RW supermulti</li> <li>14" Diagonal LED-Backlight HD (1366x769) Display</li> <li>WiFi Broadcom BCM943228HM4L 8022.11 a/b/g/n, WiFi Adapter (2x2)</li> <li>6-cell (55 WHr) Battery</li> <li>Bluetooth HP Integrated Module with Bluetooth 4.0+ EDR</li> <li>Windows 7 Professional 32 bit Operating System, HP 2012 90W Docking station</li> </ul>
GP-11-DR	<p>Same as above except 0.6-2.8mm tube and 8.0 kW output, <b>220 / 240 VAC REQUIRED</b></p>

# Configuration GP-10-DR

## Portable System with Toshiba DR Panel

<b>System #</b>	<b>GP-10-DR Portable DR System with Stand</b>
SPSLW4-AL-DR	100 mA, High Frequency, Digital Portable System

<b>CAT NO.</b>	<b>DESCRIPTION</b>
----------------	--------------------

<b>SPSLW4-AL-DR</b>	<p><b>Dragon Portable System, 4.0 kW Lightweight with Toshiba DR Flat Panel</b></p> <ul style="list-style-type: none"> <li>40 to 125 kVp in 1 kVp steps               <ul style="list-style-type: none"> <li>125 kVp @ 32 mA, 100 kVp @ 40 mA, 50 kVp @ 80 mA, 40 kVp @ 100 mA</li> </ul> </li> <li>14 mA Stations: 5, 6, 8, 10, 12.5, 16, 20, 25, 32, 40, 50, 64, 80 &amp; 100</li> <li>0.001 – 10 Second exposure time range, 0.1-250 mAs</li> <li>Allows customization of 6 APR regions (skull, thorax, spine, abdomen/pelvis, lower and upper extremities) - small, medium, large and pediatric patient sizes</li> <li>0.5mm - 1.8mm stationary anode x-ray tube, 47215 kHU</li> <li>Line Voltage: 110/220 VAC</li> <li>Generator integration with touch screen operator console</li> <li>Power Cord 20 feet long, Exposure Cord 10 feet long</li> <li>Stand on base with mechanical brakes on rear wheels</li> <li>Front steering wheels and rear main transport wheels</li> <li>17.5" to 78.7" Vertical tube travel (44.5cm – 200cm)</li> <li>Certified manual collimator with centering light and SID measuring tape</li> <li>170.9 pound total weight</li> <li>Automatic Line Power Detection System – detects the maximum power line available to avoid undesired line power breakdown when operating on poor quality lines</li> </ul>
---------------------	---

<b>FDX3543RP</b>	<p><b>Toshiba 14"x17" Tethered DR Panel</b></p> <ul style="list-style-type: none"> <li>Active area 350 (H) x 43 (V)mm (14x17")</li> <li>Cesium Iodide (CsI) with Amorphous Silicon (a-Si) photodiode</li> <li>2448 (H) x 2984 (V) Pixel Matrix; 143 micron Pixel Pitch</li> <li>Short Cycle Time: Shot to Shot 6 sec.</li> <li>Limiting Resolution: 3.7 lp/mm typical</li> <li>MTF (2.0lp/mm, 70kVp, 1x1) 36% typical; DQE &gt;70%</li> <li>16 bit A/D conversion; Energy Range: 40-150kVp</li> <li>4 mR / frame maximum entrance dose</li> <li>Power Supply Unit: 115mm x 185mm x 85mm, 2.2 pounds (1kg) Input: AC 100 to 240V, 50/60 Hz / Output: DC 24 V 1.3A 60W</li> <li>Sensor weight: 6.6 pounds (3kg)</li> </ul>
------------------	--



<b>DROC-P</b>	<p><b>ImagePlus Digital Acquisition System</b></p> <ul style="list-style-type: none"> <li>Symphony Image Processing Software to improve image contrast, adjust dynamic range, enhance details and reduce noise, to produce the highest quality images</li> <li>Generator Integration with touch screen operator console</li> <li>Anatomical Programming (APR)</li> <li>Image Management (PACS, HIS/RIS)</li> <li>DICOM communication, full DICOM 3.0 Compatibility, DICOM worklist from HIS/RIS, store images through PACS network system, DICOM image print, DICOM MPPS</li> <li>Medical Grade PSU-ATX (180W) Computer, Intel Core2 Duo T7500 2.2GHz CPU with Windows 7, 64 bits, 4GM RAM, Dual Chanel, DDRII 667MHz Memory, WLAN 802.11b/g (VIAVNT6656), 320 GB 2.5" SAT Hard Disk Drive, Integrated 17" touch screen monitor, Resolution 1280 x 1024; Contrast ratio: 1000:1, Horizontal Viewing angle: ±80° or 160° total, Vertical Viewing angle: ± 80° or 160°</li> </ul>
---------------	---

**OPTIONS:**

GP-11-DR	Same as above except 0.6-2.8mm tube and 8.0 kW output, <b>220 / 240 VAC REQUIRED</b>
----------	--



# Configuration GP-12

## 1-piece Portable System

<u>System #</u>	<u>GP-12 Portable System, 1-Piece, 4.0kW</u>
SPL-HF-4.0	4.0 kW, 100 mA, 125 kVp, H.F. Portable System
SPL-HF-8.0	8.0 kW, 100 mA, 125 kVp, H.F. Portable System

**CAT NO.**                      **DESCRIPTION**

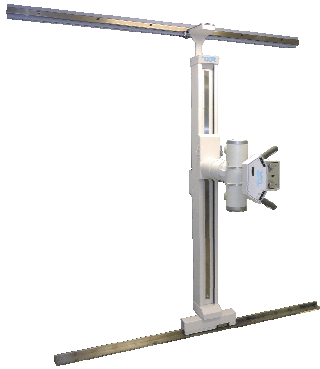
SPL-HF-4.0	Portable, One piece Generator <ul style="list-style-type: none"> <li>• 4.0kW, operates on 110 or 240 VAC power line</li> <li>• 40-125 kVp</li> <li>• 300kHz High Frequency Ripple</li> <li>• mA: 5, 6.4, 8, 10, 12.5, 16, 20, 25, 32, 40, 50, 64, 80, 100mA</li> <li>• Exposure Time Range: 0.001-10 Seconds</li> <li>• mAs Range: 0.1-250 mAs</li> <li>• APR with 20 programs</li> <li>• 0.5mm - 1.8mm stationary anode x-ray tube, 47215 kHU</li> <li>• 19.7' power cord; 9.8' exposure cord</li> <li>• 110 VAC - 240 VAC / 220 VAC - 240 VAC - requires solid 20 amp breaker on 110 V line for full power (can be de-rated)</li> <li>• Weight 33 lbs</li> </ul>
SPL-HF-8.0	Portable, One piece Generator Same specs as above, but with: <ul style="list-style-type: none"> <li>• 8.0kW, operates on 110 or 240 VAC power line</li> <li>• Dual Focus, Stationary Anode X-Ray Tube: 0.6-2.8mm fs, 76kHU, 14-degree target angle</li> </ul>

**OPTIONS:**

BOX-P	Carrying Case
SUP-RC	Mobile Stand



# Chiropractic Systems



**CH-1**



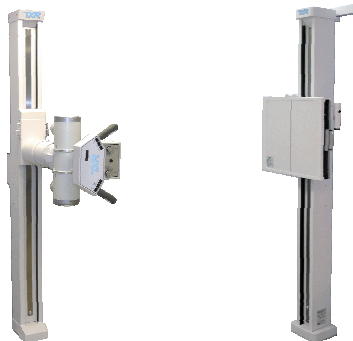
**CH-1 FIXED**



**VERT-EX**



**VERT-EX INVERTED TILT**



**CH-1 FIXED**



**VERT-EX TILT**

# Configuration CH-1

## 14 x 17" Upright System with F/W Tube Stand, Magnetic Locks

<u>System #</u>	<u>CH-1 Upright System</u>
CH1-SHF210AP	20kW, 320mA, APR, table mount & hand switch
CH1-SHF310AP	32kW, 400mA, APR, table mount & hand switch
CH1-SHF310APPSU	32kW Battery, 400mA, APR, table mount & hand switch
CH1-SHF410AP	40kW, 500mA, APR, table mount & hand switch

*HF generators priced for operation on 1-phase, 220/240VAC – see options for 3-phase power.*

<u>CAT NO.</u>	<u>DESCRIPTION</u>
----------------	--------------------

<b>13-SM/S105C</b>	<b>Floor-to-Wall Non-Rotate Tube Stand</b> <ul style="list-style-type: none"> <li>• Vertical travel 11.75" – 76.75"</li> <li>• 10" focal spot to front of column</li> <li>• Platform tube mount, angulation dial and operator handles</li> <li>• Manual lock for tube angulation</li> <li>• Electric lock for longitudinal and vertical travel</li> <li>• Fits in ceiling heights of 88"-121"</li> <li>• 39.2" Longitudinal travel with 5' floor track</li> <li>• UL Classified, operates from 24 VDC</li> </ul>
<b>13-BF7-GC/S109</b>	<b>Wall Stand with 17 x 17" Grid Cabinet</b> <ul style="list-style-type: none"> <li>• Floor to Wall Mount, Counterbalanced Column</li> <li>• Minimum ceiling height: 86" from floor</li> <li>• Vertical Travel: 9-3/4" to 72-3/4"</li> <li>• Grid Cabinet with Heavy Duty Tray and 10:1, 103 line grid</li> <li>• Electric locks (24 VDC 2 Amp required) power supply included</li> <li>• Operates on 120 VAC</li> </ul>
<b>E7239GX</b>	<b>X-Ray Tube</b> – 140,000 heat unit, 1.0-2.0mm focal spots, 180° horn angle
<b>CML-125-0001-C 10538-15</b>	<b>Collimator</b> – Certified Manual Collimator with laser light, LED, 125kVP <b>Cables</b> – pair, 15' long

# CH-1 Options

<b>CAT NO.</b>	<b>DESCRIPTION</b>
----------------	--------------------

**Generator Options:**

PD	Pedestal for control console, replaces table mount
AEC-HF-1C-A	Automatic Exposure Control, includes electronics, one (1) three field ion chamber and interconnect cable. <b>Specify ICX 162 for Left hand or ICX 192 for Right hand</b>
SHF 3PH-220	3-phase, 220 VAC generator, in place of 1-phase
SHF 3PH-380	3-phase, 380 VAC generator, in place of 1-phase
SHF 3PH-480	3-phase, 480 VAC generator, in place of 1-phase

**Tube Stand Options:**

02267-001	8' floor track in place of 5' floor track, 75.2" longitudinal travel
02267-002	10' floor track in place of 5' floor track, 99.2" longitudinal travel
13SM14/S105C	Tube stand with 14" focal spot to front of column*
13SM17/S105C	Tube stand with 17" focal spot to front of column*
13SM19/S105C	Tube stand with 19" focal spot to front of column*
13-RA-FIX/S203C	Fixed Tube stand mounts direct to wall, no rails

**Wall Stand Options:**

1011784072	10:1, 178 line grid, replaces 10:1, 103 line grid
13-BF7-B/S109	Wall Stand with Bucky, replaces grid cabinet

**Tube Options:**

E7239FX	140,000 H.U., 1.0-2.0mm, 90°, replaces E7239FX
E7242FX	200,000 H.U., 0.6-1.5mm, 90°, replaces E7239FX
E7242GX	200,000 H.U., 0.6-1.5mm, 180°, replaces E7239FX
E7884X	300,000 H.U. 0.6-1.2mm, 270°, replaces E7239FX

\*not all lengths in stock, contact TXR for lead time

# Configuration GP-9

## VertEx Tilting Upright and Extremity System

<u>System #</u>	<u>GP-9 Upright System</u>
GP9-SHF210AP	20kW, 320mA, APR, table mount & hand switch
GP9-SHF310AP	32kW, 400mA, APR, table mount & hand switch
GP9-SHF310APPSU	32kW Battery, 400mA, APR, table mount & hand switch
GP9-SHF410AP	40kW, 500mA, APR, table mount & hand switch

***HF generators priced for operation on 1-phase, 220/240VAC – see options for 3-phase power.***

<u>CAT NO.</u>	<u>DESCRIPTION</u>
----------------	--------------------

<b>13-RA-23/S105-8</b>	<b>Floor-to-Wall Non-Rotate Tube Stand</b> <ul style="list-style-type: none"> <li>• Vertical travel 11.75" – 76.75"</li> <li>• 23" focal spot to front of column</li> <li>• Platform tube mount, angulation dial and operator handles</li> <li>• Manual lock for tube angulation</li> <li>• Electric lock for longitudinal and vertical travel</li> <li>• Fits in ceiling heights of 88"-121"</li> <li>• 75.2" Longitudinal travel with 8' floor track</li> <li>• UL Classified, operates from 24 VDC</li> </ul>
<b>13-BF7T-GC/S102</b>	<b>Wall Stand with Tilt, 17 x 17" Grid Cabinet</b> <ul style="list-style-type: none"> <li>• Tilt wall stand features electric vertical lock and Mechanical tilt lock; RH load standard</li> <li>• Vertical travel: 15.5" – 79"</li> <li>• Tilt mechanism +90° / -45°; See Inverted Tilt Option</li> <li>• Grid Cabinet with Heavy Duty Tray and 10:1, 103 line grid</li> <li>• Electric locks (24 VDC 2 Amp required) power supply included</li> <li>• Operates on 120 VAC</li> </ul>
<b>E7239GX</b>	<b>X-Ray Tube</b> – 140,000 heat unit, 1.0-2.0mm focal spots, 180° horn angle
<b>CML-125-0001-C</b>	<b>Collimator</b> – Certified Manual Collimator with laser light, LED, 125kVP
<b>10540-25</b>	<b>Cables</b> – pair, 25' long

\*\* In order to obtain 72" to both to the wall receptor and center to horizontal wall receptor, exact placement of 8' rail is required \*\*  
 Longer rail available, see options next page.

# GP-9 Options

CAT NO.	DESCRIPTION
---------	-------------

**Generator Options:**

PD	Pedestal for control console, replaces table mount
AEC-HF-1C-A	Automatic Exposure Control, includes electronics, one (1) three field ion chamber and interconnect cable. Specify ICX 162 for Left hand or ICX 192 for Right hand
SHF 3PH-220	3-phase, 220 VAC generator, in place of 1-phase
SHF 3PH-380	3-phase, 380 VAC generator, in place of 1-phase
SHF 3PH-480	3-phase, 480 VAC generator, in place of 1-phase

**Tube Stand Options:**

02267-002	10 foot track provides 99.2" longitudinal travel
-----------	--

**Wall Stand Options:**

1011784072	10:1, 178 line grid, replaces 10:1, 103 line grid
13-BF7/ITGC/S102	Wall stand, <b><i>Inverted Tilt</i></b> +45° -70°

**Tube Options:**

E7239FX	140,000 H.U., 1.0-2.0mm, 90°, replaces E7239GX
E7242FX	200,000 H.U., 0.6-1.5mm, 90°, replaces E7239GX
E7242GX	200,000 H.U., 0.6-1.5mm, 180°, replaces E7239GX
E7884X	300,000 H.U. 0.6-1.2mm, 270°, replaces E7239GX

***This Page Intentionally Left Blank***

# Veterinary Systems



**S1SV-32, Variable SID, 4-Way Float Table – Film/CR**



**V2D, Fixed SID, 4-way Float Table, CCD**



**V3SV, Fixed SID, 4-way Float Table, Flat Panel**



# Configuration S1SV-32

## Veterinary Suite, 4 Way Float Top Table with Integrated Tube Stand, Variable SID

**System #                      S1SV-32 Vet 4 Way Table / Tube Stand System**

S1SV-32                      32kW, 400mA, APR, control mounts at tube

*HF generators priced for operation on 1-phase, 220/240VAC – see options for 3-phase power.*

**CAT NO.                      DESCRIPTION**

<b>S1SV-32</b>	<p><b>Standard Vet X-Ray System</b></p> <ul style="list-style-type: none"> <li>• 4-way float top table, 5' long</li> <li>• Exposure Foot Pedal</li> <li>• Variable SID for table top and cassette tray</li> <li>• Tube stand is stationary</li> <li>• Rotating tube head</li> <li>• Foot treadle to operate table locks</li> <li>• Heavy duty grid cabinet with 8:1, 103 line grid</li> <li>• Stainless steel, heavy duty, manual cassette tray</li> </ul>
<b>6690-06</b>	<b>X-Ray Tube</b> – 140,000 heat unit, 1.0-2.0mm focal spots, 90° horn angle
<b>6693-40</b>	<b>Collimator</b> – Certified manual collimator (R108)
<b>6680-06</b>	<b>Cables</b> – pair, 6-meter long

***Note: High frequency control console mounts at the tube.***

# S1SV-32 Options

CAT NO.	DESCRIPTION
---------	-------------

**Generator Options:**

SHF 3PH-220	3-phase, 220 VAC generator, in place of 1-phase
SHF 3PH-380	3-phase, 380 VAC generator, in place of 1-phase
SHF 3PH-480	3-phase, 480 VAC generator, in place of 1-phase

**Table Options:**

1011783444	10:1, 178 line grid, replaces 8:1, 103 line grid
------------	--

**Tube Options:**

E7242FX	200,000 H.U., 0.6-1.5mm, 90°, replaces E7239FX
E7884X	300,000 H.U. 0.6-1.2mm, 270°, replaces E7239FX

# Configuration V1DS-M

## Digital Veterinary System - 14 x 17" 6 Mega Pixel with Four Way Float Top Table, Attached Tube Stand – Membrane Console

**System #**                      **V1DS Digital Vet System**

V1DS-SHF310AP    32kW, 400mA, APR, *membrane* control console mounts at tube

*HF generator priced for operation on 1-phase, 220/240VAC – see options for 3-phase power.*

**CAT NO.**                      **DESCRIPTION**

<b>TV4F-SV3F</b>	<p><b>Four Way Float Top Table with Attached Fixed SID Tube Stand</b></p> <ul style="list-style-type: none"> <li>• 4-way float top table, 5' long</li> <li>• 22" longitudinal travel and 7" lateral travel</li> <li>• Built-in Anatomical Programming with Parameter Override</li> <li>• 208/220/240 VAC Single Phase Power</li> </ul>
<b>6690-29</b>	<p><b>E7865X X-Ray Tube</b> – 140,000 heat unit, 0.3-1.0mm focal spots, 270° horn angle</p>
<b>6693-39</b>	<p><b>Collimator</b> – Certified manual collimator with swivel mount</p> <ul style="list-style-type: none"> <li>• <b>Hands free collimator light activation via table foot treadle</b></li> </ul>
<b>6680-06</b>	<p><b>Cables, HV</b> pair, 6 M with Vinyl Cable Wrap</p>
<b>CD-61417</b>	<p><b>Digital Detector, CCD Technology</b></p> <ul style="list-style-type: none"> <li>• 6 Mega pixel, 14" x 17" field size</li> <li>• 2.8 lp/mm</li> </ul>
<b>PC-HP800</b>	<p><b>PC for digital systems</b></p> <ul style="list-style-type: none"> <li>• HP800 Workstation with Intel Core i5 3.4GHz Processor</li> <li>• 4 GB Memory</li> <li>• Two (2) 1 TB hard drives (mirrored) set up as RAID1</li> <li>• NVIDIA GeForce 8400 GS Video Card</li> <li>• Windows 7</li> <li>• HP 5 year service agreement including parts and labor on-site, next business day</li> <li>• Keyboard and 2-button optical mouse with scroll</li> <li>• CD/DVD burner</li> <li>• True Generator Integration</li> <li>• 24" Dell wide screen monitor</li> <li>• Stitching Software</li> <li>• Unlimited Viewing licenses for additional work stations</li> <li>• QX Link PACS Software with Archive Capability</li> </ul>

# V1DS-M Options

CAT NO.	DESCRIPTION
---------	-------------

**Generator Options:**

SHF 3PH-220	3-phase, 220 VAC generator, in place of 1-phase
SHF 3PH-380	3-phase, 380 VAC generator, in place of 1-phase
SHF 3PH-480	3-phase, 480 VAC generator, in place of 1-phase

**Tube Options:**

E7242FX	200,000 H.U., 0.6-1.5mm, 90°, replaces E7865X
E7884X	300,000 H.U. 0.6-1.2mm, 270°, replaces E7865X

**Digital Detector:**

CD-61216	6 Mega pixel, 12" x 16" detector, 3.3 lp/mm
----------	---

**Work Station Monitor:**

PC-WSC	Cart on wheels for monitor and PC
--------	-----------------------------------

**Assistance:**

On-Site CCD Calibrations and Applications Assistance

**IT Support:**

Standard IT support is 1 year.

# Configuration V1DS-T

## Digital Veterinary System - 14 x 17" 6 Mega Pixel with Four Way Float Top Table, Attached Tube Stand – Touch screen Console

**System #**                      **V1DS Digital Vet System**

V1DS-SHF310AP      32kW, 400mA, APR, *touch screen* control console mounts at tube

*HF generator priced for operation on 1-phase, 220/240VAC – see options for 3-phase power.*

<b><u>CAT NO.</u></b>	<b><u>DESCRIPTION</u></b>
TV4F-SV3F	<b>Four Way Float Top Table with Attached Fixed SID Tube Stand</b> <ul style="list-style-type: none"> <li>• 4-way float top table, 5' long</li> <li>• 22" longitudinal travel and 7" lateral travel</li> <li>• Built-in Anatomical Programming with Parameter Override</li> <li>• 208/220/240 VAC Single Phase Power</li> </ul>
6690-29	<b>E7865X X-Ray Tube</b> – 140,000 heat unit, 0.3-1.0mm focal spots, 270° horn angle
6693-39	<b>Collimator</b> – Certified manual collimator with swivel mount <ul style="list-style-type: none"> <li>• <b>Hands free collimator light activation via table foot treadle</b></li> </ul>
6680-06	<b>Cables, HV pair, 6 M with Vinyl Cable Wrap</b>
CD-61417	<b>Digital Detector, CCD Technology</b> <ul style="list-style-type: none"> <li>• 6 Mega pixel, 14" x 17" field size</li> <li>• 2.8 lp/mm</li> </ul>
PC-HP800	<b>PC for digital systems</b> <ul style="list-style-type: none"> <li>• HP800 Workstation with Intel Core i5 3.4GHz Processor</li> <li>• 4 GB Memory</li> <li>• Two (2) 1 TB hard drives (mirrored) set up as RAID1</li> <li>• NVIDIA GeForce 8400 GS Video Card</li> <li>• Windows 7</li> <li>• HP 5 year service agreement including parts and labor on-site, next business day</li> <li>• Keyboard and 2-button optical mouse with scroll</li> <li>• CD/DVD burner</li> <li>• True Generator Integration</li> <li>• 24" Dell wide screen monitor</li> <li>• Stitching Software</li> <li>• Unlimited Viewing licenses for additional work stations</li> <li>• QX Link PACS Software with Archive Capability</li> </ul>

# V1DS-T Options

CAT NO.	DESCRIPTION
---------	-------------

**Generator Options:**

SHF 3PH-220	3-phase, 220 VAC generator, in place of 1-phase
SHF 3PH-380	3-phase, 380 VAC generator, in place of 1-phase
SHF 3PH-480	3-phase, 480 VAC generator, in place of 1-phase

**Tube Options:**

E7242FX	200,000 H.U., 0.6-1.5mm, 90°, replaces E7865X
E7884X	300,000 H.U. 0.6-1.2mm, 270°, replaces E7865X

**Digital Detector:**

CD-61216	6 Mega pixel, 12" x 16" detector, 3.3 lp/mm
----------	---

**Work Station Monitor:**

PC-WSC	Cart on wheels for monitor and PC
--------	-----------------------------------

**Assistance:**

On-Site CCD Calibrations and Applications Assistance

**IT Support:**

Standard IT support is 1 year.

# Configuration V-2D

## Vet *DigitalEase II* Deluxe 17 x 17” 9 Mega Pixel Digital Veterinary System with Four Way Float Top Table, Attached Tube Stand – Touch screen Console

<b><u>System #</u></b>	<b><u>V-2D Vet DigitalEase System</u></b>
------------------------	---

V2D-SHF410AP	40kW, 500mA, APR, <b><i>touch screen</i></b> control, mounts at tube
--------------	--

***HF generator priced for operation on 1-phase, 220/240VAC – see options for 3-phase power.***

<b><u>CAT NO.</u></b>	<b><u>DESCRIPTION</u></b>
-----------------------	---------------------------

<b>SDV-4WFT-ITT</b>	<b>Four Way Float Top Table with Fixed SID Attached Tube Stand</b>
---------------------	--

- 59” x 28.3” Four way float top table
- Enclosed welded base with contemporary molded covers
- Integrated tube stand fixed at 40” SID, centered to detector
- Magnetic locks control table top movement
- Digital detector mounted in table base off floor
- 13” integrated touch screen control console mounted at the tube

<b>E7865X</b>	<b>X-Ray Tube</b> – 140,000 heat unit, 0.3-1.0mm focal spots, 270° horn angle
---------------	---

<b>S-R108</b>	<b>Collimator</b> – Certified manual collimator with swivel mount
	• <b>Hands free collimator light activation via table foot treadle</b>

<b>6680-06</b>	<b>Cables</b> – pair, 19.5’
----------------	-----------------------------

<b>CD-91717</b>	<b>Digital Detector, CCD Technology</b>
-----------------	---

- 9 Mega pixel, CSi scintillator
- 17” x 17” field size
- 3.4 lp/mm

<b>PC-HP800</b>	<b>PC for digital systems</b>
-----------------	-------------------------------

- HP800 Workstation with Intel Core i5 3.4GHz Processor
- 4 GB Memory
- Two (2) 1 TB hard drives (mirrored) set up as RAID1
- NVIDIA GeForce 8400 GS Video Card
- Windows 7
- HP 5 year service agreement including parts and labor on-site, next business day
- Keyboard and 2-button optical mouse with scroll
- CD/DVD burner
- True Generator Integration
- 24” Dell wide screen monitor
- Stitching Software
- Unlimited Viewing licenses for additional work stations
- QX Link PACS Software with Archive Capability

# V-2D Options

CAT NO.	DESCRIPTION
---------	-------------

---

**Generator Options:**

SHF 3PH-220	3-phase, 220 VAC generator, in place of 1-phase
SHF 3PH-380	3-phase, 380 VAC generator, in place of 1-phase
SHF 3PH-480	3-phase, 480 VAC generator, in place of 1-phase

**Tube Options:**

E7242FX	200,000 H.U., 0.6-1.5mm, 90°, replaces E7865X
E7884X	300,000 H.U. 0.6-1.2mm, 270°, replaces E7865X

**Digital Detector:**

CD-161717	16 Mega pixel, 17" x 17" detector
-----------	-----------------------------------

**Work Station Monitor:**

PC-WSC	Cart on wheels for monitor and PC
--------	-----------------------------------

**Assistance:**

On-Site CCD Calibrations and Applications Assistance

**IT Support:**

Standard IT support is 1 year.



# Configuration V3SV-SHF310VTC

## Digital Veterinary, 4 Way Float Table, Fixed SID, Viewworks DR Panel

<b>System #</b>	<b>V3SV-SHF310VTC Digital Vet System</b>
V3SV-SHF310VTC	32kW, 400mA, APR, Touch Screen

<b>CAT NO.</b>	<b>DESCRIPTION</b>
<b>SHF 310VTC</b>	<b>32kW, 400 mA, 500 mAs HF Touch Screen Generator</b> <ul style="list-style-type: none"> <li>• 400 mA, 125 kVp (400 mA @ 80 kVp)</li> <li>• Seventeen mA stations – 10, 12.5, 16, 20, 25, 32, 40, 50, 64, 80, 100, 125, 160, 200, 250, 320, 400</li> <li>• 0.001 to 10 second time range, 0.1 to 500 mAs</li> <li>• kVp selection, 40 to 125 kVp in 1 kV increments</li> <li>• Generator integration with acquisition monitor</li> <li>• Automatic line compensation</li> <li>• APR, Anatomical Programming</li> <li>• Exposure foot switch</li> <li>• UL/CE/FDA Listed</li> <li>• <b>For Operation on 1 Phase 208/240VAC, see option for 3 phase</b></li> </ul>
<b>SITT-60</b>	<b>60" 4 Way Float Table with Fixed SID tube stand</b> <ul style="list-style-type: none"> <li>• DR Cabinet to accept panel</li> </ul>
<b>Digital Detector</b>	<b>17"x17" Digital flat panel detector with power supply unit</b> <ul style="list-style-type: none"> <li>• 17" x 17" full image field size, 3.5 lp/mm Resolution</li> <li>• Amorphorous Silicon Sensor (a-SI), High Speed Gadox Scintillator</li> <li>• 140 micron pixel pitch, 9.4 million pixels (3008 x 3072)</li> <li>• 4096 gray scale (14 bits A/D)</li> <li>• Preview image in 6 seconds after exposure</li> <li>• 2 meter cable on Detector panel to Power Supply</li> <li>• QXView Acquisition software</li> <li>• DICOM 3.0 compatible, Ethernet 10/100 Base T</li> <li>• Sensor weight: 20 pounds</li> </ul>
<b>PC-HP800</b>	<b>PC for digital systems</b> <ul style="list-style-type: none"> <li>• HP800 Workstation with Intel Core i5 3.4GHz Processor</li> <li>• 4 GB Memory</li> <li>• Two (2) 1 TB hard drives (mirrored) set up as RAID1</li> <li>• NVIDIA GeForce 8400 GS Video Card</li> <li>• Windows 7</li> <li>• HP 5 year service agreement including parts and labor on-site, next business day</li> <li>• Keyboard and 2-button optical mouse with scroll</li> <li>• CD/DVD burner</li> <li>• True Generator Integration</li> <li>• 24" Dell wide screen monitor</li> <li>• Stitching Software</li> <li>• Unlimited Viewing licenses for additional work stations</li> <li>• QX Link PACS Software with Archive Capability</li> </ul>
<b>E7865X</b>	<b>X-Ray Tube</b> – 140,000 H.U. 0.3 – 1.0mm focal spots
<b>S-R108</b>	<b>Collimator</b> – Veterinary collimator for digital applications <ul style="list-style-type: none"> <li>• <b>Hands free collimator light activation via table foot treadle</b></li> </ul>

**IT Support:**

Standard IT support is 1 year.

# Configuration V-DUPG-VW

## Vieworks Vivix Digital Vet Upgrade

<u>System #</u>	<u>V-DUPG-VW Digital Flat Panel Vet Upgrade</u>
V-DUPG-VW	Vivix Digital Vet Upgrade

<u>CAT NO.</u>	<u>DESCRIPTION</u>
----------------	--------------------

**Digital Detector**

**17"x17" Digital flat panel detector with power supply unit**

- 17" x 17" full image field size, 3.5 lp/mm Resolution
- Amorphorous Silicon Sensor (a-Si), High Speed Gadox Scintillator
- 140 micron pixel pitch, 9.4 million pixels (3008 x 3072)
- 4096 gray scale (14 bits A/D)
- Preview image in 6 seconds after exposure
- 2 meter cable on Detector panel to Power Supply
- QXView Acquisition software
- DICOM 3.0 compatible, Ethernet 10/100 Base T
- Sensor weight: 20 pounds
- Cabinet for Detector

**PC-HP800**

**PC for digital systems**

- HP800 Workstation with Intel Core i5 3.4GHz Processor
- 4 GB Memory
- Two (2) 1 TB hard drives (mirrored) set up as RAID1
- NVIDIA GeForce 8400 GS Video Card
- Windows 7
- HP 5 year service agreement including parts and labor on-site, next business day
- Keyboard and 2-button optical mouse with scroll
- CD/DVD burner
- 24" Dell wide screen monitor
- Stitching Software
- Unlimited Viewing licenses for additional work stations
- QX Link PACS Software with Archive Capability

**IT Support:**

Standard IT support is 1 year.

***This Page Intentionally Left Blank***

# Generators



# Generators – High Frequency

CAT NO.	DESCRIPTION
SHF210AP	<p><b>20kW, 320 mA, 500 mAs High Frequency Generator</b></p> <ul style="list-style-type: none"> <li>• 320 mA, 125 kVp (250 mA @ 80 kVp)</li> <li>• Sixteen mA stations – 10, 12.5, 16, 20, 25, 32, 40, 50, 64, 80, 100, 125, 160, 200, 250, 320</li> <li>• 0.001 to 10 second time range</li> <li>• 0.1 to 500 mAs</li> <li>• kVp selection, 40 to 125 kVp in 1 kV increments</li> <li>• Digital displays</li> <li>• Automatic line compensation</li> <li>• APR, Anatomical Programming</li> <li>• Table mount</li> <li>• Exposure hand switch</li> <li>• UL/CE/FDA Listed</li> <li>• <b>For Operation on 1 Phase 208/240VAC, see option for 3 phase</b></li> </ul>
SHF210AP-V	<p><b>20kW, 320 mA, 500 mAs Veterinary HF Generator</b> Same as above but with Veterinary Techniques – <b>NO Hand Switch</b></p>
SHF210AP-TC	<p><b>20kW, 320 mA, High Frequency Generator with:</b> E7239FX 140kHU, 1.0-2.0mm focal spot tube with 90° horns <i>and</i> 10538-15 Cables, pair – 15' long, federal terminations</p>
SHF 310AP	<p><b>32kW, 400 mA, 500 mAs High Frequency Generator</b></p> <ul style="list-style-type: none"> <li>• 400 mA, 125 kVp (400 mA @ 80 kVp)</li> <li>• Seventeen mA stations – 10, 12.5, 16, 20, 25, 32, 40, 50, 64, 80, 100, 125, 160, 200, 250, 320, 400</li> <li>• 0.001 to 10 second time range</li> <li>• 0.1 to 500 mAs</li> <li>• kVp selection, 40 to 125 kVp in 1 kV increments</li> <li>• Digital displays</li> <li>• Automatic line compensation</li> <li>• APR, Anatomical Programming</li> <li>• Table mount</li> <li>• Exposure hand switch</li> <li>• UL/CE/FDA Listed</li> <li>• <b>For Operation on 1 Phase 208/240VAC, see option for 3 phase</b></li> </ul>
SHF 310AP-V	<p><b>32kW, 400 mA, 500 mAs Veterinary HF Generator</b> Same as above but with Veterinary Techniques – <b>NO Hand Switch</b></p>
SHF 310AP-TC	<p><b>32kW, 400 mA, High Frequency Generator with:</b> E7239FX 140kHU, 1.0-2.0mm focal spot tube with 90° horns <i>and</i> 10538-15 Cables, pair – 15' long, federal terminations</p>

# High Frequency Generator Options

<b>CAT NO.</b>	<b>DESCRIPTION</b>
----------------	--------------------

**Line Voltage Options:**

SHF 3PH-220	3-phase, 220 VAC generator, in place of 1-phase
SHF 3PH-380	3-phase, 380 VAC generator, in place of 1-phase
SHF 3PH-480	3-phase, 480 VAC generator, in place of 1-phase

**AEC**

AEC	Automatic Exposure Control, for one (1) ion chamber, <b>(see ADAPTA option below; order ion chamber separately (see below))</b>
ADAPTA	Allows use of up to three (3) ion chambers
ICX 159	3-Field ion chamber for table
ICX 162	3-Field ion chamber, left hand load
ICX 192	3-Field ion chamber, right hand load

**Tube Options:**

E7239GX	140,000 H.U., 1.0-2.0mm, 90°, replaces E7239FX
E7242FX	200,000 H.U., 0.6-1.5mm, 90°, replaces E7239FX
E7242GX	200,000 H.U., 0.6-1.5mm, 180°, replaces E7239FX
E7884X	300,000 H.U. 0.6-1.2mm, 270°, replaces E7239FX

**Miscellaneous:**

PD	Pedestal for control console, replaces table mount
403.307.00	For VET generators, bracket to mount console at tube head

# Generators – High Frequency

CAT NO.	DESCRIPTION
SHF 410AP	<p><b>40kW, 500 mA, 500 mAs High Frequency Generator</b></p> <ul style="list-style-type: none"> <li>• 500 mA, 125 kVp (500 mA @ 80 kVp)</li> <li>• Eighteen mA stations, 10, 12.5, 16, 20, 25, 32, 40, 50, 64, 80, 100, 125, 160, 200, 250, 320, 400, 500</li> <li>• 0.001 to 10 second time range</li> <li>• 0.1 to 500 mAs</li> <li>• kVp selection, 40 to 125 kVp in 1 kV increments</li> <li>• Digital displays</li> <li>• Automatic line compensation</li> <li>• APR, Anatomical Programming</li> <li>• Table mount</li> <li>• Exposure hand switch</li> <li>• UL/CE/FDA Listed</li> <li>• <b>For Operation on 1 Phase 208/240VAC, see option for 3 phase</b></li> </ul>
SHF 410AP-V	<p><b>40kW, 500 mA, 500 mAs Veterinary HF Generator</b> Same as above but with Veterinary Techniques – <b>NO Hand Switch</b></p>
SHF 410AP-TC	<p><b>40kW, 500 mA, High Frequency Generator with:</b> E7239FX 140kHU, 1.0-2.0mm focal spot tube with 90° horns <i>and</i> 10538-15 Cables, pair – 15' long, federal terminations</p>
SHF 510AP	<p><b>50kW, 640 mA, 500 mAs High Frequency Generator</b></p> <ul style="list-style-type: none"> <li>• 640 mA, 125 kVp (640 mA @ 78 kVp)</li> <li>• Nineteen mA stations – 10, 12.5, 16, 20, 25, 32, 40, 50, 64, 80, 100, 125, 160, 200, 250, 320, 400, 500, 640</li> <li>• 0.001 to 10 second time range</li> <li>• 0.1 to 500 mAs</li> <li>• kVp selection, 40 to 125 kVp in 1 kV increments</li> <li>• Digital displays</li> <li>• Automatic line compensation</li> <li>• APR, Anatomical Programming</li> <li>• Table mount</li> <li>• Exposure hand switch</li> <li>• UL/CE/FDA Listed</li> <li>• <b>For Operation on 1 Phase 208/240VAC, see option for 3 phase</b></li> </ul>
SHF 510AP-TC	<p><b>50kW, 640 mA, High Frequency Generator with:</b> E7242FX 200kHU, 0.6-1.5mm focal spot tube with 90° horns <i>and</i> 10538-15 Cables, pair – 15' long, federal terminations</p>

# High Frequency Generator Options

<u>CAT NO.</u>	<u>DESCRIPTION</u>
----------------	--------------------

**Line Voltage Options:**

SHF 3PH-220	3-phase, 220 VAC generator, in place of 1-phase
SHF 3PH-380	3-phase, 380 VAC generator, in place of 1-phase
SHF 3PH-480	3-phase, 480 VAC generator, in place of 1-phase

**AEC**

AEC	Automatic Exposure Control, for one (1) ion chamber, ( <b>see ADAPTA option below; order ion chamber separately (see below)</b> )
ADAPTA	Allows use of up to three (3) ion chambers
ICX 159	3-Field ion chamber for table
ICX 162	3-Field ion chamber, left hand load
ICX 192	3-Field ion chamber, right hand load

**Tube Options:**

E7239GX	140,000 H.U., 1.0-2.0mm, 90°, replaces E7239FX
E7242FX	200,000 H.U., 0.6-1.5mm, 90°, replaces E7239FX
E7242GX	200,000 H.U., 0.6-1.5mm, 180°, replaces E7239FX
E7884X	300,000 H.U. 0.6-1.2mm, 270°, replaces E7239FX

**Miscellaneous:**

PD	Pedestal for control console, replaces table mount
----	--



# Generators – High Frequency

CAT NO.	DESCRIPTION
SHF 635AP (380V) or SHF 645AP (480V)	<b>64kW, 640 mA, 500 mAs High Frequency Generator</b> <ul style="list-style-type: none"> <li>• 640 mA., 150 kVp (640 mA @ 100 kVp)</li> <li>• Nineteen mA stations, 10, 12.5, 16, 20, 25, 32, 40, 50, 64, 80, 100, 125, 160, 200, 250, 320, 400, 500, 640</li> <li>• 0.001 to 10 second time range</li> <li>• 0.1 to 500 mAs</li> <li>• kVp selection, 40 to 125 kVp in 1 kV increments</li> <li>• Digital displays</li> <li>• Automatic line compensation</li> <li>• APR, Anatomical Programming</li> <li>• High Speed Starter</li> <li>• Table mount</li> <li>• Exposure hand switch</li> <li>• UL/CE/FDA Listed</li> <li>• <b>For Operation on 3 Phase 380/480VAC</b></li> </ul>
SHF 635AP-TC (380V) or SHF 645AP-TC (480V)	<b>64kW, 500 mA, High Frequency Generator with:</b> E7252FX 300kHU, 0.6-1.2mm fs <b>high speed tube</b> with 90° horns <b>and</b> 10538-15 Cables, pair – 15' long, federal terminations
SHF 835AP (380V) or SHF 845AP (480V)	<b>80kW, 800 mA, 500 mAs High Frequency Generator</b> <ul style="list-style-type: none"> <li>• 800 mA., 150 kVp (800 mA @ 100 kVp)</li> <li>• Twenty mA stations, 10, 12.5, 16, 20, 25, 32, 40, 50, 64, 80, 100, 125, 160, 200, 250, 320, 400, 500, 640, 800</li> <li>• 0.001 to 10 second time range</li> <li>• 0.1 to 500 mAs</li> <li>• kVp selection, 40 to 125 kVp in 1 kV increments</li> <li>• Digital displays</li> <li>• Automatic line compensation</li> <li>• APR, Anatomical Programming</li> <li>• High Speed Starter</li> <li>• Table mount</li> <li>• Exposure hand switch</li> <li>• UL/CE/FDA Listed</li> <li>• <b>For Operation on 3 Phase 380/480VAC</b></li> </ul>
SHF 835AP-TC (380V) or SHF 845AP-TC (480V)	<b>80kW, 800 mA, High Frequency Generator with:</b> E7254FX 400kHU, 0.6-1.2mm fs <b>high speed tube</b> with 90° horns <b>and</b> 10538-15 Cables, pair – 15' long, federal terminations

# High Frequency Generator Options

<u>CAT NO.</u>	<u>DESCRIPTION</u>
----------------	--------------------

**Line Voltage Options:**

SHF 3PH-220	3-phase, 220 VAC generator, in place of 1-phase
SHF 3PH-380	3-phase, 380 VAC generator, in place of 1-phase
SHF 3PH-480	3-phase, 480 VAC generator, in place of 1-phase

**AEC**

AEC	Automatic Exposure Control, for one (1) ion chamber, <b>(see ADAPTA option below; order ion chamber separately (see below))</b>
ADAPTA	Allows use of up to three (3) ion chambers
ICX 159	3-Field ion chamber for table
ICX 162	3-Field ion chamber, left hand load
ICX 192	3-Field ion chamber, right hand load

**Tube Options:**

E7884X	300,000 H.U. 0.6-1.2mm, 270°, replaces E7242FX
E7254X	400,000 H.U. 0.6-1.2mm, 270°, replaces E7252FX

**Miscellaneous:**

PD	Pedestal for control console, replaces table mount
STO	Two tube operation, RAD only
TTO	Three tube operation, RAD only
HSS-1T	High Speed Starter, single tube
HSS-2T	High Speed Starter, two tube
CTSC	Touch screen option
SHF 8351/8451	1000mA generator (for 80 kW ONLY), replaces 800mA Upgrade to 640 mAs
A6152-01	Step up transformer, for line power below 210 VAC, single phase
A6152-03	Step up transformer, 3 phase generator, 208-240 VAC

# Generators

## Battery Operated High Frequency

CAT NO.	DESCRIPTION
SHF 310AP PSU	<p><b>32kW, 400 mA, 500 mAs Battery HF Generator</b></p> <ul style="list-style-type: none"> <li>• 400 mA, 125 kVp (400 mA @80 kVp)</li> <li>• Seventeen mA stations – 10, 12.5, 16, 20, 25, 32, 40, 50, 64, 80, 100, 125, 160, 200, 250, 320, 400</li> <li>• 0.001 to 10 second time range</li> <li>• 0.1 to 500 mAs</li> <li>• kVp selection, 40 to 125 kVp in 1 kV increments</li> <li>• Digital displays</li> <li>• Automatic line compensation</li> <li>• APR, Anatomical Programming</li> <li>• Table mount, Exposure hand switch</li> <li>• UL/CE/FDA Listed</li> <li>• <b>For Operation on 1 Phase 120 or 240 VAC</b></li> </ul>
SHF 310AP PSU-TC	<p><b>32kW, 400 mA, Battery HF Generator with:</b> E7239FX 140kHU, 1.0-2.0mm focal spot tube with 90° horns <b>and</b> 10538-15 Cables, pair – 15' long, federal terminations</p>
SHF 410AP PSU	<p><b>40kW, 500 mA, 500 mAs Battery HF Generator</b></p> <ul style="list-style-type: none"> <li>• 500 mA., 125 kVp (500 mA. @80 kVp)</li> <li>• Eighteen mA stations, 10, 12.5, 16, 20, 25, 32, 40, 50, 64, 80, 100, 125, 160, 200, 250, 320, 400, 500</li> <li>• 0.001 to 10 second time range</li> <li>• 0.1 to 500 mAs</li> <li>• kVp selection, 40 to 125 kVp in 1 kV increments</li> <li>• Digital displays</li> <li>• Automatic line compensation</li> <li>• APR, Anatomical Programming</li> <li>• Table mount, Exposure hand switch</li> <li>• UL/CE/FDA Listed</li> <li>• <b>For Operation on 1 Phase 120 or 240 VAC</b></li> </ul>
SHF 410AP-TC	<p><b>40kW, 500 mA, Battery HF Generator with:</b> E7239FX 140kHU, 1.0-2.0mm focal spot tube with 90° horns <b>and</b> 10538-15 Cables, pair – 15' long, federal terminations</p>
SHF 510AP PSU	<p><b>50kW, 640 mA, 500 mAs Battery HF Generator</b></p> <ul style="list-style-type: none"> <li>• 640 mA, 125 kVp (640 mA @ 78 kVp)</li> <li>• Nineteen mA stations – 10, 12.5, 16, 20, 25, 32, 40, 50, 64, 80, 100, 125, 160, 200, 250, 320, 400, 500, 640</li> <li>• 0.001 to 10 second time range</li> <li>• 0.1 to 500 mAs</li> <li>• kVp selection, 40 to 125 kVp in 1 kV increments</li> <li>• Digital displays</li> <li>• Automatic line compensation</li> <li>• APR, Anatomical Programming</li> <li>• Table mount, Exposure hand switch</li> <li>• UL/CE/FDA Listed</li> <li>• <b>For Operation on 1 Phase 120 or 240 VAC</b></li> </ul>

# High Frequency Generator Options

CAT NO.	DESCRIPTION
---------	-------------

**AEC**

AEC-HF	Automatic exposure control electronics for high frequency Generator, accepts one (1) ion chamber only; <b>see ADAPTA option below. Order ion chamber separately (see below)</b>
ADAPTA 150kVp	Allows use of up to three (3) ion chambers Upgrade generator from 125kVp to 150kVp

**Tube Options:**

E7242FX	200,000 H.U., 0.6-1.5mm, 90°, replaces E7239FX
E7242X	200,000 H.U., 0.6-1.5mm, 270°, replaces E7239FX
E7884X	300,000 H.U. 0.6-1.2mm, 270°, replaces E7239FX

**Miscellaneous:**

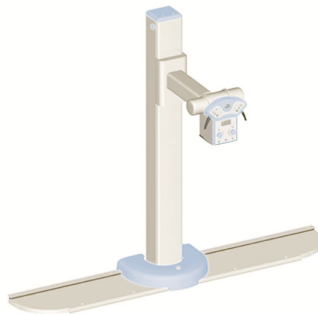
PD	Pedestal for control console, replaces table mount
----	--

***This Page Intentionally Left Blank***

**Tube Stands / Tables / Wall Stands  
Cables / Tubes / Collimators / Grids  
Grid Cabinets / Buckys / Trays**



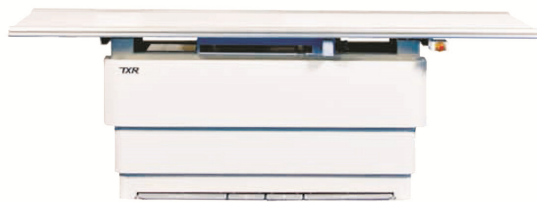
**Ceiling Tube Mount (CSST)**



**MILL-FMTSAD Floor Mount Tube Stand**



**13-CT/S114 Floor-to-Wall Mounted Tube Stand**



**MILL-EL-B Elevating Table**



**MULTI-FWFTT-G Four Way Float Top Table**



# Tube Stands

CAT NO.	DESCRIPTION
CSST	<p><b>CTM - Manual Operation</b></p> <ul style="list-style-type: none"> <li>• Aluminum construction, reduces weight</li> <li>• 360° vertical and horizontal rotation</li> <li>• 15' longitudinal rails / 10' bridge</li> <li>• Ceiling Rail for Cable draping of the high voltage cables</li> <li>• Maximum transverse travel 92.5" (235.2 cm)</li> <li>• Maximum longitudinal travel 187.5" (476.5 cm)</li> <li>• Vertical travel 63" (160 cm)</li> <li>• Digital display of tube for SID and tube angulation</li> <li>• Intuitive color coded lock releases, Electromagnetic brakes</li> <li>• Electromagnetic angulations and rotation locks remain ON even when system is OFF. The electromagnetic longitudinal and transverse locks remain ON only when system is ON.</li> <li>• Tube rotation around vertical column <math>\pm 135^\circ</math> with detents every <math>45^\circ</math></li> <li>• Tube rotation around column horizontal axis <math>\pm 180^\circ</math> with detents every <math>45^\circ</math></li> <li>• Plug in electrical assemblies reduce time associated with installation, calibration &amp; maintenance</li> <li>• Trunnion Tube Mount, 65' HV Cables and Cover for X-Ray Tube</li> </ul>
MILL-FMTSAD	<p><b>Floor Mount Rotate Tube Stand with Digital Readout</b></p> <ul style="list-style-type: none"> <li>• Longitudinal tube travel 78.74" (200 cm)</li> <li>• Transverse tube travel: 11.81" (30 cm)</li> <li>• Vertical tube travel: 63.78" (162 cm)</li> <li>• Focal spot to floor, variable from 15.75"-79.53" (40-202 cm)</li> <li>• X-Ray Tube Rotation <math>\pm 150^\circ</math> / Tube stand Column Rotation <math>\pm 180^\circ</math></li> <li>• Electromagnetic brakes</li> <li>• Tube arm console controls: longitudinal, transverse, vertical and rotational lock control buttons</li> <li>• Tube arm console displays: SID and tube angle around horizontal axis</li> <li>• 108.5" (275.6 cm) floor track, provides 78.74" (200 cm) travel</li> </ul>
13-CSM/S225	<p><b>Rotate Floor-to-Wall Tube Stand with Transverse Travel</b></p> <ul style="list-style-type: none"> <li>• +/-5" Transverse travel</li> <li>• 360° Column Rotation, mechanical detent</li> <li>• Vertical travel 13.5"-76.8"</li> <li>• 39.2" wall to focal spot at detent position</li> <li>• Platform tube mount, Angulation dial</li> <li>• Magnetic locks for longitudinal, transverse, vertical &amp; tube rotation</li> <li>• Fits in ceiling heights of 93"-120"</li> <li>• 75.7" Longitudinal Travel with 8' floor track</li> <li>• UL Classified, operates from 24 VDC</li> </ul>
13-CT/S114	<p><b>Floor-to-Wall Non-Rotate Tube stand with Transverse Travel</b></p> <ul style="list-style-type: none"> <li>• +/-5" Transverse travel</li> <li>• Vertical travel of 13.25" to 73.5"</li> <li>• 36" wall to focal spot at transverse detent position</li> <li>• Platform tube mount, Angulation dial</li> <li>• Magnetic locks for longitudinal, transverse, vertical &amp; tube rotation</li> <li>• Fits in ceiling heights of 88"-121"</li> <li>• 75.2" Longitudinal Travel with 8' floor track</li> <li>• UL Classified, operates from 24 VDC</li> </ul>

# Tube Stands

<b>CAT NO.</b>	<b>DESCRIPTION</b>
<b>13-RA-23/S105-8</b>	<b>Floor-to-Wall Non-Rotate Tube Stand (Medical)</b> <ul style="list-style-type: none"> <li>• Vertical travel 11.75" – 76.75"</li> <li>• 23" focal spot to front of column</li> <li>• Platform tube mount, angulation dial and operator handles</li> <li>• Manual lock for tube angulation</li> <li>• Electric lock for longitudinal and vertical travel</li> <li>• Fits in ceiling heights of 88"-121"</li> <li>• 75.2" Longitudinal travel with 8' floor track</li> <li>• UL Classified, operates from 24 VDC</li> </ul>
<b>13-SM/S105C</b>	<b>Floor-to-Wall Non-Rotate Tube Stand (Chiro)</b> <ul style="list-style-type: none"> <li>• Vertical travel 11.75" – 76.75"</li> <li>• 10" focal spot to front of column</li> <li>• Platform tube mount, angulation dial and operator handles</li> <li>• Manual lock for tube angulation</li> <li>• Electric lock for longitudinal and vertical travel</li> <li>• Fits in ceiling heights of 88"-121"</li> <li>• 39.2" Longitudinal travel with 5' floor track</li> <li>• UL Classified, operates from 24 VDC</li> </ul>
<b>13-RA-FIX/S203C</b>	<b>FIXED Chiropractic Tube Stand - mounted to wall - no rails</b> <ul style="list-style-type: none"> <li>• Fixed tube stand mounted to wall</li> <li>• Platform tube mount, angulation dial and operator handles</li> <li>• 84.9"H x 7.9" D with 10" tube arm</li> <li>• Operates on 24 VDC</li> </ul>

## Tube Stand Options

<b>CAT NO.</b>	<b>DESCRIPTION</b>
<b><u>CSST (CTM) OPTIONS:</u></b>	
RL34	11' long longitudinal rails or RL4 13' long longitudinal rails
RL53	17' long longitudinal rails
RL6	20' long longitudinal rails
RT225	7' Bridge – RT25 8' Bridge or RT275 9' Bridge
SS-CTM	Support Structure—provides suspension of CTM without unistrut
LT-CTM	Lifting tool for CTM
<b><u>MILL-FMTSAD:</u></b>	
MILL-FMTSAD3M	147.8" floor rail, provides 118" (3m) travel
A8715-01	24 VDC Power Supply
<b><u>13-CSM/S225 &amp; 13-CT/S114</u></b>	
	10' floor track, provides 99.2" longitudinal travel (in place of 8')
<b><u>13-RA-23/S105-8</u></b>	
02267-002	10' floor track in place of 5' floor track
13-SM/S105C	Tube stand with 10" focal spot to front of column*
13SM14/S105C	Tube stand with 14" focal spot to front of column*
13SM17/S105C	Tube stand with 17" focal spot to front of column*
13SM19/S105C	Tube stand with 19" focal spot to front of column*

\*not all lengths in stock, contact TXR for lead time.



# Medical Tables

CAT NO.	DESCRIPTION
MILL-EL-B	<p><b><u>Elevating, Four Way Float Top Table – 750 lb (340kg) Patient Load</u></b></p> <ul style="list-style-type: none"> <li>• 86.5" x 31.5" float top table (217.4 x 80 cm)</li> <li>• 43.3" longitudinal and 9.5" lateral table top travel</li> <li>• Min height: 19.69"; Max height: 35.43" (500 mm-900 mm)</li> <li>• Collision protection</li> <li>• Super speed bucky</li> <li>• 103 line, 10:1 ratio, 34-44" focal range grid</li> <li>• Heavy duty manual cassette tray</li> </ul>
MULTI-FWFTT-G	<p><b>Four Way Float Top Table, Fixed Height, Multirad</b></p> <ul style="list-style-type: none"> <li>• 86.6" x 32.4" float top table (2200mm x 825mm)</li> <li>• Table top supports patients up to 661 lbs (300 kgs)</li> <li>• Longitudinal table top travel 35" (+/-17.5") (900mm)</li> <li>• Transverse table top travel 9" (+/-4.5") (230mm)</li> <li>• Table top to Film Distance: 4" (102mm)</li> <li>• Bucky travel: 20.3" (581mm)</li> <li>• Table top to floor distance 30.3" (769mm)</li> <li>• Electromagnetic brakes</li> <li>• Heavy duty grid cabinet</li> <li>• Heavy duty manual cassette tray</li> <li>• 103 line, 10:1 ratio, 34-44" focal range grid</li> </ul>
13-FBT	<p><b><u>Stationary Top table – 325 lb (147.5kg) Patient Load</u></b></p> <ul style="list-style-type: none"> <li>• 72" x 27.5" table top (182.9 x 69.9 cm)</li> <li>• Heavy duty grid cabinet</li> <li>• 103 line, 10:1 ratio, 34-44" focal range grid</li> <li>• Heavy duty manual cassette tray</li> </ul>
SEMER-001	<p><b>Mobile Patient Table with Laminated table top</b></p> <ul style="list-style-type: none"> <li>• 78.74" L x 25.59" W x 27.55" H (200 x 65 x 70 cm)</li> <li>• 441 pound patient load</li> <li>• Locking casters on front wheel</li> <li>• 101 pounds (45.8kg)</li> </ul>
SEMER-002	<p><b>Mobile Patient Table with Carbon fiber table top</b></p> <ul style="list-style-type: none"> <li>• 86.61"L x 25.59" W x 27.55" H (220 x 65 x 70 cm)</li> <li>• 441 pound patient load</li> <li>• Locking casters on front wheel</li> <li>• 66.1 pounds (30 kg)</li> </ul>
FLEXI-DTEP	<p><b>Mobile, Elevating, four way float top table, laminated top</b></p> <ul style="list-style-type: none"> <li>• Battery Operated, allows full day use on charge</li> <li>• 96" x 35" (243.8 x 88.9 cm) laminated top, supports 440 pound (199.6kg) patient</li> <li>• Travel: 62.2" (158 cm) Longitudinal, 7.8" (19.8 cm) Transverse, 15.8" (40.1 cm) Vertical</li> <li>• Min. table height 23.6" (60 cm); Max. table height 39.4" (100 cm)</li> <li>• Two (2) Fixation Pins allowing the table to be fixed at the same location all the time, or allowing the table to be moved around one pin to work with the wall stand</li> <li>• Anti Collision, Electromagnetic Brakes, Positive Wheel Lock</li> </ul>

# Medical Table Options

<b>CAT NO.</b>	<b>DESCRIPTION</b>
----------------	--------------------

---

**MILL-EL-B, MULTI-FH-G, 13-FBT**

1011783444	10:1, 178 line grid, replaces 10:1, 103 line grid
------------	---

**MULTI-FH-G**

MULTI-FWFTT-B	Super Speed Bucky, replaces grid cabinet
---------------	--

**Ion Chamber**

ICX-159	Three Field Ion Chamber
---------	-------------------------

# Wall Stands

CAT NO.	DESCRIPTION
13-BF7/S109	<b>Wall Stand ONLY, NO grid cabinet, grid or tray</b> <ul style="list-style-type: none"> <li>Floor to Wall Mount, Counterbalanced Column</li> <li>Minimum ceiling height: 86" from floor</li> <li>Vertical Travel: 9-3/4" to 72-3/4"</li> <li>Electric locks (24 VDC 2 Amp required) power supply included</li> <li>Operates on 120 VAC</li> </ul>
13-BF7-GC/S109	<b>Wall Stand with 17 x 17" Grid Cabinet</b> <ul style="list-style-type: none"> <li>Floor to Wall Mount, Counterbalanced Column</li> <li>Minimum ceiling height: 86" from floor</li> <li>Vertical Travel: 9-3/4" to 72-3/4"</li> <li>Grid Cabinet with Heavy Duty Tray and 10:1, 103 line grid</li> <li>Electric locks (24 VDC 2 Amp required) power supply included</li> <li>Operates on 120 VAC</li> </ul>
13-BF7T/S102	<b>Wall Stand with Tilt, NO grid cabinet, grid or tray</b> <ul style="list-style-type: none"> <li>Tilt wall stand features electric vertical lock and Mechanical tilt lock; RH load standard</li> <li>Vertical travel: 15.5" – 79"</li> <li>Tilt mechanism +90° / -45°</li> <li>Electric locks (24 VDC 2 Amp required) power supply included</li> <li>Operates on 120 VAC</li> <li>Inverted Tilt <b>Optional</b></li> </ul>
13-BF7T-GC/S102	<b>Wall Stand with Tilt, 17 x 17" Grid Cabinet</b> <ul style="list-style-type: none"> <li>Tilt wall stand features electric vertical lock and Mechanical tilt lock; RH load standard</li> <li>Vertical travel: 15.5" – 79"</li> <li>Tilt mechanism +90° / -45°</li> <li>Grid Cabinet with Heavy Duty Tray and 10:1, 103 line grid</li> <li>Electric locks (24 VDC 2 Amp required) power supply included</li> <li>Operates on 120 VAC</li> <li>Inverted Tilt <b>Optional</b></li> </ul>
MIL-WBS-ADT	<b>Millenium Wall Stand with Bucky</b> <ul style="list-style-type: none"> <li>Floor Wall Mount with Electromagnetic locks</li> <li>Vertical travel 16" (41cm) to 75" (191cm)</li> <li>Reciprocating Bucky, Manual Cassette Tray</li> <li>103 line, 10:1, 40-72" (101.6-182.9 cm) focus ratio aluminum grid</li> </ul>

## Wall Stand Options

CAT #	DESCRIPTION
13-BF7-B/S109	Wall stand with Bucky, replaces grid cabinet
13-BF7IT-GC/S102	Wall stand with Inverted Tilt +45° / -70°; vertical travel 10"-67.25"
ICX162	3-field ion chamber, left hand load
ICX192	3-field ion chamber, right hand load
1011784072	10:1, 178 line grid, replaces 10:1, 103 line

# X-Ray Tubes

CAT NO.	DESCRIPTION
E7239FX	140,000 Heat Unit X-Ray Tube (Left Shoot) 90° cable arms, 125 kVp, 1.0-2.0mm focal spot, 3" anode, 16° target
E7239GX	140,000 Heat Unit X-Ray Tube (Right or Left Shoot) 180° cable arms, 125 kVp, 1.0-2.0mm focal spot, 3" anode, 16° target
E7239X	140,000 Heat Unit X-Ray Tube (Right Shoot) 270° cable arms, 125 kVp, 1.0-2.0mm focal spot, 3" anode, 16° target
E7865X	140,000 Heat Unit X-Ray Tube (Right Shoot) 270° cable arms, 125 kVp, 0.3-1.0mm focal spots
E7242FX	200,000 Heat Unit X-Ray Tube (Left Shoot) 90° cable arms, 125 kVp, 0.6-1.5mm focal spot, 3" anode, 14° target
E7242GX	200,000 Heat Unit X-Ray Tube (Right or Left Shoot) 180° cable arms, 125 kVp, 0.6-1.5mm focal spot, 3" anode, 14° target
E7884FX	300,000 Heat Unit X-Ray Tube (Left Shoot) 90° cable arms, 150 kVp, 0.6-1.2mm focal spot, 3" anode, 12° target
E7884X	300,000 Heat Unit X-Ray Tube (Right Shoot) 270° cable arms, 150 kVp, 0.6-1.2mm focal spot, 3" anode, 12° target
E7252FX	300,000 Heat Unit <b>High Speed</b> X-Ray Tube (Left Shoot) 90° cable arms, 150 kVp, 0.6-1.2mm focal spots, 3" anode, 12° target
E7252GX	300,000 Heat Unit <b>High Speed</b> X-Ray Tube (Right or Left Shoot) 180° cable arms, 150 kVp, 0.6-1.2mm focal spots, 3" anode, 12° target
E7254FX	400,000 Heat Unit <b>High Speed</b> X-Ray Tube (Left Shoot) 90° cable arms, 150 kVp, 0.6-1.2mm focal spots, 4" anode, 12° target
E7869FX	600,000 Heat Unit <b>High Speed</b> X-Ray Tube (Left Shoot) 90° cable arms, 150 kVp, 0.6-1.2mm focal spots, 4" anode, 12° target

## H.V. Cables, 150 kVp

CAT NO.	DESCRIPTION
10537-10	Pair, 10' Cables
10538-15	Pair, 15' Cables
10539-20	Pair, 20' Cables
10540-25	Pair, 25' Cables
10541-30	Pair, 30' Cables
10542-35	Pair, 35' Cables
10545-50	Pair, 50' Cables
10546-55	Pair, 55' Cables
10547-60	Pair, 60' Cables
10548-65	Pair, 65' Cables
A6855-06	Vinyl Cable Wrap, 19.69'
A6855-09	Vinyl Cable Wrap, 29.5'
A6855-12	Vinyl Cable Wrap, 39.37'
A6855-20	Vinyl Cable Wrap, 65.62'

## Collimators

CAT NO.	DESCRIPTION
CML-125-0001-C	Certified Manual Collimator with laser light, LED, 125kVP
CML-150-0001-C	Certified Manual Collimator with laser light, LED, 150kVp

## Grids – Dimensions 17-1/4 x 18-7/8”

CAT NO.	DESCRIPTION
1011033444	10:1 ratio, 103line, 34"-44" focal range
1011034072	10:1 ratio, 103 line, 40"-72" focal range
1011783444	10:1 ratio, 178 line, 34"-44" focal range
1011784072	10:1 ratio, 178 line, 40"-72" focal range
K17103444	10:1 ratio, 215 line, 34"-44" focal range
K17102040	10:1 ratio, 215 line, 40"-72" focal range

# Grid Cabinets, Bucky's & Cassette Trays

<u>CAT NO.</u>	<u>DESCRIPTION</u>
----------------	--------------------

---

## Grid Cabinet

412.700.00	Grid Cabinet
404.701.02	Detector Cabinet, Wall Stand, Vieworks 17"x17" (includes front panel)

## Front Panel

SSB100	Front panel for bucky or grid cabinet
--------	---------------------------------------

## Cassette Tray, Manual

A8894-01	17x17" Heavy Duty Manual Cassette Tray
----------	--

# Parts List

CAT NO.	DESCRIPTION
<b><u>CAPACITORS</u></b>	
PSU3635	250VAC Rotor Capacitor
27L6011	mA Stabilizer Capacitor without bracket
ECQ-E	Backup Contactor Capacitor
<b><u>COLLIMATOR</u></b>	
Call Tech Support for part number and pricing. Serial Number required prior to quoting	
<b><u>CONTACTORS</u></b>	
160.100.00	Contactor, 120V/60Hz: 110V 50Hz
173.100.00	SCR Pack, 80A
T-7776-24	SCR Harness (Timer Board to SCR/Backup Contactor)
<b><u>COUNTERWEIGHTS &amp; CABLES (for units manufactured prior to August, 2015)</u></b>	
200470	Cable, Counterweight, Long
201890	Cable, Counterweight, Short
CTW-5	Counterweight, Trim, 5LB
CTW-45	Counterweight, 45LB
CTW-65	Counterweight, 65LB
CTW-105	Counterweight, 105 LB Cast Iron (CT)
<b><u>FOOTSWITCHES</u></b>	
862-1460-20	Footswitch with 15' Cord for TXR Table Applications (18/3)
160.100.03	Footswitch with 15' Cord for TXR Generator Application (18/4)
A6389-04	Footswitch for SHF310 High Frequency VET System
<b><u>FUSES &amp; CIRCUIT BREAKERS</u></b>	
160.100.01	60 AMP Circuit Breaker 2 Pole
2152A5	Lamp Indicator, Green 120VAC/2W (expose)
2150A3	Lamp Indicator, Amber 120VAC/2W (prep)
<b><u>HF SERIES GENERATORS</u></b>	
Below are general part numbers which vary depending on serial number. Call Tech Support to confirm part number and pricing. Serial Number required prior to quoting.	
53404019	Rectifier
53416016	IGBT Module
53801011	50 Amp Fuses / 600 V
A3255-03	Input Rectifier Board, 1phase & 3 phase
A3000-33	HT Controller Board
A3024-21	ATP Console Board
A3063-03	IPM Driver Board
A3285-02	Battery Charger Board
A3399-06	Hand Switch, Sedecal
A3508-02	Battery Monitor Board
A6152-01	Step up transformer, for line power below 210 VAC, single phase
A6152-03	Step up transformer, 3 phase generator, 208-240 VAC
A6271-00	Table mount for operator console
A6275-01	Operator console, VET
A6284-00	Operator console, Human
A7066-01	50' Serial Cable
SOFT-ATP	U24 Software E-PROM
SOFT-HT	U5 Software E-PROM
<b><u>KNOBS &amp; DIALS</u></b>	
Rogan-1/120 TIME	Time Selector Knob & Dial Assembly 1/120th to 6 Sec.
Rogan-kVp-325	kV Selector Knob & Dial
233.100.00	mA Selector Knob & Dial (400mA)
Rogan-mA-500	mA Selector Knob & Dial (500mA)
403.401.06	Knob, Wall Bucky Kit & Hardware
1-281-017	Handle (for handlebar assemblies)

# Parts List

<b>CAT NO.</b>	<b>DESCRIPTION</b>	<b>LIST PRICE</b>
<b><u>METERS</u></b>		
T-7767	Digital mA Meter with Display	
T-7768C	Digital kVp Meter with Display	
T-7768-2	kVp Meter Harness	
T-7776-2	mAs Display	
<b><u>PC BOARDS</u></b>		
T-7799D	Motherboard, for units manufactured from 2007 on	
T-7788	PCB, Lock for Bucky stand (mag pack)	
T-7801E	PCB, Lock for Table (mag pack)13-FBT-4WFT	
T-7822	24VAC Power Distribution Board for Collimators & Locks	
T-7902	DC Power/mA Circuit Board & Harness	
T-7792-4	Handle Bar Board Only 4 Button	
T-7792-6	Handle Bar Board Only 6 Button	
T-7823	PCB on CSM Skateboard	
<b><u>RELAYS</u></b>		
T-7799D-24VAC	24VAC, DPDT – All Models	
T-7799D-120VAC	120VAC, DPDT – All Models	
<b><u>RESISTORS</u></b>		
D100K1K0	100 Watt-1000 Ohm (R2) Replacement mA/Small	
D100K500	100 Watt- 500 Ohm (R3) Replacement mA/Large	
D100K2K5	100 Wall – 2500 Ohm (R1) kV Filament	
<b><u>RIBBON CABLES</u></b>		
T-7776-10	10 Pin Ribbon Cable	
T-7776-14	14 Pin Ribbon Cable, Long	
T-7767-14	14 Pin Ribbon Cable, Short	
T-7776-20	20 Pin Ribbon Cable	
T-7799-26	26 Pin Ribbon Cable	
<b><u>ROTOR CONTROLS</u></b>		
T-7634	220VAC Rotor Control Board - All Models	
T-7634-1	220VAC Harness for Rotor Control Board	
<b><u>SWITCHES</u></b>		
160.100.02	Prep/Expose Switch	
T-7776-3A	Timer Switch with Ribbon Cable	
975S	Solenoid Kit (975S-1 Plunger, 975S-2 Spring)	
T-7869	Table/Wall Bucky Switch, 2 Position (for x-ray control)	
OHM 312-9	Tap Switch (Specify Major or Minor)	
T-7780-2	mA Selector Switch	
<b><u>TIMERS, MICROPROCESSORS</u></b>		
T-7776-UPGRADE	Timer Board, Timer Switch, Ribbon Cable, Timer harness, Adaption Place, 1/120th Knob/Dial and Jumper for Tube Limit (if mAs display is not upgraded). For use on any generator manufactured prior to 1998.	
T-7776A	Timer Board for All Models 1998 – Present	
T-7776-25	Timer Harness	
<b><u>TRANSFORMERS &amp; LOCKS</u></b>		
625-1	HV Transformer, Complete	
18568	50/60 Hz mA Stabilizer (Order Capacitor Separately)	
7880B	Space Charger Transformer	
19359	100V Transformer	
12756B	24VAC, Collimator, Lock and Coil Supply	
16437	Lock, Universal Wire Lock (Tube, Table & Wall)	
19377A	Lock, Low Profile – Extruded 13-FBT-4WFT-E	
403.100.00	Step-up/down XFMR, 208V (12x12x8 encased)	
404.205.06	Assy, Bucky Carriage Lock	
404.302.01	Assy, Horizonontal Lock	
CT-8	Assy, Lock for CSM model skateboards	



# Parts List

CAT NO.	DESCRIPTION	LIST PRICE
---------	-------------	------------

**TUBE STANDS/BUCKY STANDS/TABLES**

404.300.05	Tube Mount Assembly with Manual Lock	
404.300.06	Handlebar Assembly, 4 Button	
404.301.03	Handlebar Assembly, 6 Button	
93-4H	Harness, Handlebar, 4 Button (SM,MA & RA)	
93-6H	Harness, Handlebar, 6 Button (CT)	
13-CT-H	Harness, Handlebar, 6 Button (CSM)	
404.300.00	Skateboard Assembly, 24" (SM, MA & RA)	
404.301.00	Skateboard Assembly, 32" (CT)	
404.302.00	Skateboard Assembly 40" (CSM)	
404.203.01	Carriage Assembly (Table)	
404.401.01	Carriage Assembly (All Stands)	
404.300.03	Column Assembly (with pulleys & side covers)	
404.300.07	Column Cap Assembly	
404.302.06	Top Bearing Assembly (new) (RA, SM, CT, CSM)	
403.401.01	Kit, fixed wall bracket (to stabilize 13-BF-7E)	
125012	Shaft, Yoke (RA, CT, CSM)	
SM704	Shaft, Yoke (SM-new version)	
TWA-P	Touch up Paint (for all TXR equipment)	
404.300.04	Carriage assembly with arm for 13-RA-84	

**LABELS**

185.300.00	Label, Handle bar Overlay, 4 Button	
185.301.00	Label, Handle bar Overlay, 6 Button	

# System Warranty Summary

## **ADVANTAGE PLUS CTM SYSTEMS, URS-T LP SYSTEMS, URS-T LP PLUS SYSTEMS and ML1 SYSTEMS**

- 2 year parts warranty. Tube is 1<sup>st</sup> year full, 2<sup>nd</sup> year prorated.

## **GP3, GP4, GP5, GP6, GP7 & GP9 MEDICAL SYSTEMS CH1 CHIRO AND V1, V2, S1SV32 VET SYSTEMS**

- 5 year parts warranty. Tube is 1<sup>st</sup> year full, remaining 4 years prorated.

## **GP10, GP11, GP12, GP10-LP and GP10-DR PORTABLE SYSTEMS**

- 1 year parts on full system

## **FLAT PANEL VET SYSTEMS**

- Standard 5 year parts warranty on all items with exception of detector
- Tube is 1<sup>st</sup> year full, remaining 4 years prorated.
- 3 year parts warranty on detector (portable detector must be mounted and fixed in table for 3 year warranty) If detector is not fixed in table, warranty is 1 year
- IT support is 1 year. See system page to extend

## **CCD, VET**

- 5 years parts including detector
- Tube is 1<sup>st</sup> year full, remaining 4 years prorated.
- See PC warranty in system specifications.
- IT support is 1 year. See system page to extend

## **LOOSE HIGH FREQUENCY GENERATORS & GENERATOR/TUBE/CABLE PACKAGES:**

- 5 year parts warranty on SHF210, SHF310AP, SHF410AP, SHF310AP-PSU & SHF410AP-PSU (excludes batteries)
- 2 year parts warranty on SHF510AP & SHF510AP-PSU (excludes batteries), SHF635 and SHF835
- Tube is 1<sup>st</sup> year full, remaining 4 years prorated.







