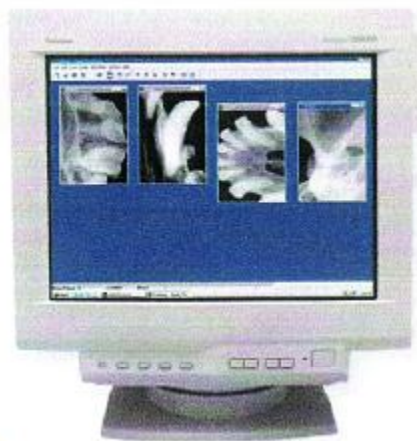


EVA-VET® VETERINARY DENTAL DIGITAL IMAGING SYSTEM

- Highest Resolution Diagnostic Images
- Patented "Active Column" CMOS Technology
- Features "Smart Sensor" Electronics
- Cost-Effective Networking
- USB Connectivity

The Future Of  
Veterinary  
Digital Imaging  
Has Arrived



VISIONARY IMAGING



Visionary Imaging

250 Clearbrook Rd.  
Elmsford, NY 10523

Phone: 800.592.6666

914.592.6100

Fax: 914.592.6148

e-mail: marketing@afpimaging.com

www.afpimaging.com

**AFP IMAGING ... reliable and affordable dental imaging products for over two decades. An ISO9001 Company**

Digital Imaging

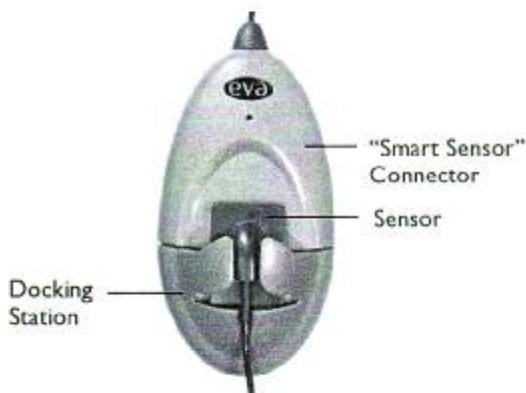
Dental X-Rays

Rapid Hand Tank Chemistry

Automatic Film Processors

Dental Film

Intraoral Cameras



Docking Station with Sensor Module stored in holder



Top and bottom views of the Sensor Capsule\* \* with rear exit cable

\*\* 3 sizes available



Vet is a filmless, digital dental imaging radiology system that produces highest resolution, diagnostic quality images. Utilizing patented "Active Column" CMOS technology, EVA Vet produces high efficiency, low noise images which are digitized and transmitted to your computer via a standard USB (Universal Serial Bus) port and is compatible with laptop or desktop systems.

Digital imaging delivers significantly increased revenue to today's high-tech practice. Requiring less labor, it increases patient throughput and is safer for the animal with reduced X-Ray exposure.

Easy-to-use, state-of-the-art digital imaging eliminates the inconvenience of film processing and the 3 to 6 minute wait for a single X-Ray image archiving is fast and simple for patient data base archives. Interfaces with AFP Prolmage or other image and practice management software suites.

Ideally suited for endodontic applications and caries detection, the operational simplicity of digital radiography consolidates workflow as it builds productivity.

## EVA-Vet® Digital Imaging System Specifications\*

### EVA-Vet System Includes:

- One EVA-Vet Sensor Unit - size 1 or 2 (corresponding to standard dental X-Ray film sizes). Size "4" type available soon.
- One Docking Station with USB cable
- Prolmage Dental Image Management Software Suite
- Disposable Protective Sheaths
- Quick Start Guide
- Installation and Operation User Guide (online)

### EVA-Vet Sensor

(Size #2)  
Active Area: 25.83 mm x 36.03 mm (1.02" x 1.42")  
Capsule Dimensions: 30.82 mm x 44.12 mm x 4.75 mm  
Image size (unpacked): 2.1 MegaBytes

(Size #1)  
Active Area: 20 mm x 30 mm (.79" x 1.18")  
Capsule Dimensions: 25.64 x 38.44 mm x 4.75 mm  
Image size (unpacked): 1.3 MegaBytes

Sensor Type: Active Column CMOS  
Pixel size: 30 microns square  
Gray Shades: 4096 (12 bits)  
Optical Imager Resolution: 16 lp/mm  
Sensor Cable Length: 2 m (~ 6 ft)

Power Supply: USB powered device  
No external power supply required

Interface: USB

Shipping Weight: 2 lbs. (.76 kg)

Warranty: One year parts coverage.

\* Computer is not supplied with the EVA-Vet Digital Imaging System.

Specifications subject to change without notice.

Minimum Computer Requirements: PIII-500MHz+; Medical rated power supply; 128Mb RAM;

USB Port; CD-ROM drive; HD1GB+; MSWin 98, ME, 2000, XP; 1024X768@32 bits

EVA is a registered trademark of AFP Imaging Corp.