



Contact us to learn more.
sales@jpihealthcare.com | 516.513.1330 ext. 3
Visit us at jpihealthcare.com

VETERINARY EXCLUSIVE

BLUE Ultrasound

See. Touch. Feel the difference.



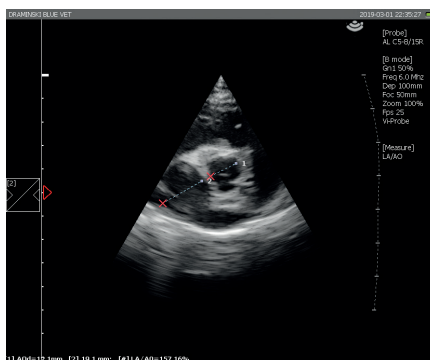
BLUE Ultrasound

- Highly responsive and precise
- Detailed examinations and ECC protocols
- Doppler: Colour, Power, Pulse Wave
- For 24/7 hospitals and small practices
- Remote access for training and support
- DICOM Worklist and PACS integration

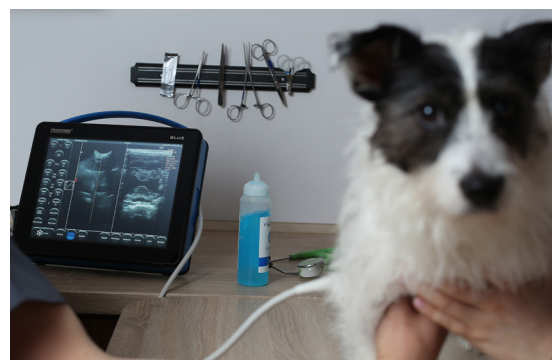


Portable ultrasound for companion animal veterinarians.

With the Blue, you'll be able to complete more examinations and gather more detailed information about the patient. The Blue provides fast and accurate treatment planning, which translates into increased customer satisfaction and more profits for your clinic.



Dog – heart. Examination using the Vi-Probe function.



Technologies of the future:



to interpret.

LuciD™ a system that enhances contrast, sharpness and tissue differentiation making images readable and easy



the human eye perception.

D-Curve™ helps distinguishing between slight echogenicity differences – a tone transfer curve ideally suited to



provides enhanced vision, despite a small acoustic window.

Vi-Probe™ is a unique technology that provides phased array image type on the convex probe and convex image on the linear probe. BLUE

Technical data:

Imaging modes	B Mode, B+B Mode, 4B Mode, B+M Mode, Doppler: Colour, Power, Pulse Wave
Operating frequency	1-14 MHz (probe type dependant)
Frame memory and cine loop viewing	60 GB
Data recording	Images and cine loops with description, patient data and date
Data transmission to a data storage device	USB Interface and DICOM Transfer by LAN or Wireless Network
Exported file format	PNG for images, AVI, MP4, MOV for cine loop
Number of probe ports	One port, automatic probe recognition
External ports	2 x USB, 2 x LAN, 1 x HDMI
Screen	12" LED LCD display
Feature control	Touch panel
Boot up time	Approx. 25 s
Continuous operation time with battery supply	Approx. 2 hours 30 min.
Battery charging time	Approx. 4 hours.
Accessories	Wheel stand and VESA mount
Operating temperature	From -15 °C to +45 °C
Recommended storage temperature	From 0 °C to +45 °C