



SKAN Cvet

High Frequency Veterinary
Mobile Surgical C-Arm

Know your *Skanc*

C-Arm System

- ▶ 2.2kW (110VAC) / 3.5kW (220VAC-240VAC), 80-250kHz dual processor mono-block generator with proprietary radiation shielding technology
- ▶ High Frequency Inverter with switching range 80 - 250kHz
- ▶ Low Leakage Radiation
- ▶ Image capture with 1k x 1k resolution for exceptional image quality
- ▶ Laser Aimer & Virtual Collimation for exposure-less alignment of Region of Interest
- ▶ DICOM 3 support & storage of over 100,000 images as standard
- ▶ kVp range: 40-110, mA range: 0.2-12
- ▶ Pulse Fluoroscopy mode upto 12mA
- ▶ Fluoro upto 8mA, Burst fluoro up to 30 frames
- ▶ Repeated Mask selection & Peak Opacification features
- ▶ Auto Roadmap marking
- ▶ Better subtracted image quality



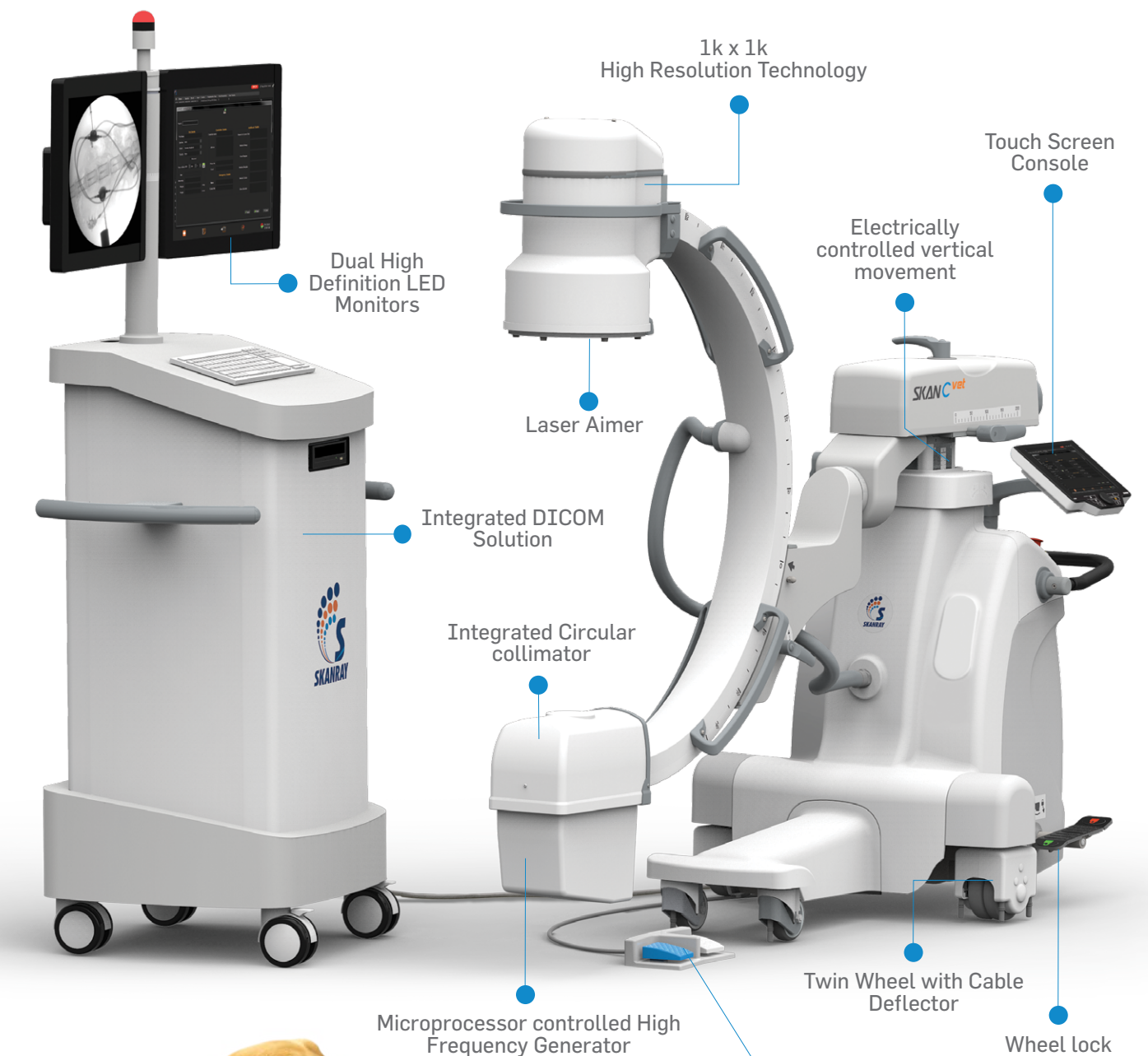
Touch screen console

- ▶ 10.4" TFT LCD display with optical encoder and hot keys for easy operation
- ▶ Anti-glare SVGA 800(H)x600(V) resolution display
- ▶ Supports optical encoder and hot keys for ease of operation
- ▶ Laser aimer control
- ▶ Menu driven user friendly operation

Workstation View



SKANray*vet*



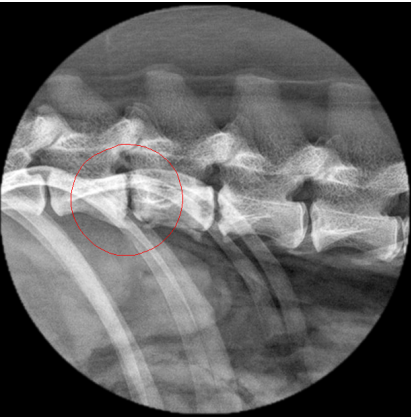
Gastrointestinal



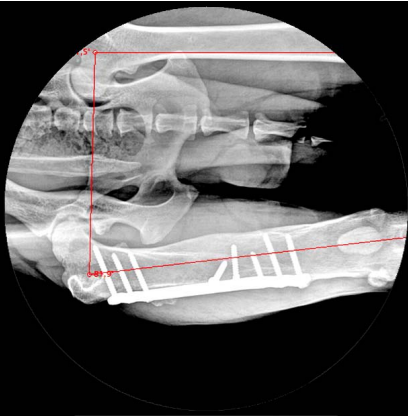
Neurosurgery



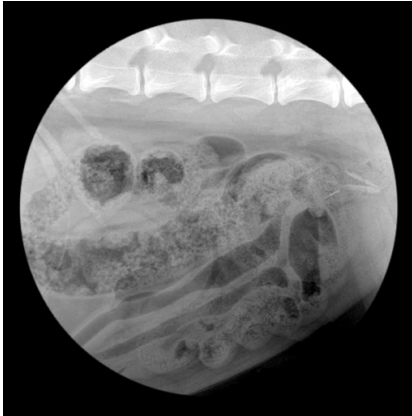
Spine Procedure



Orthopaedic



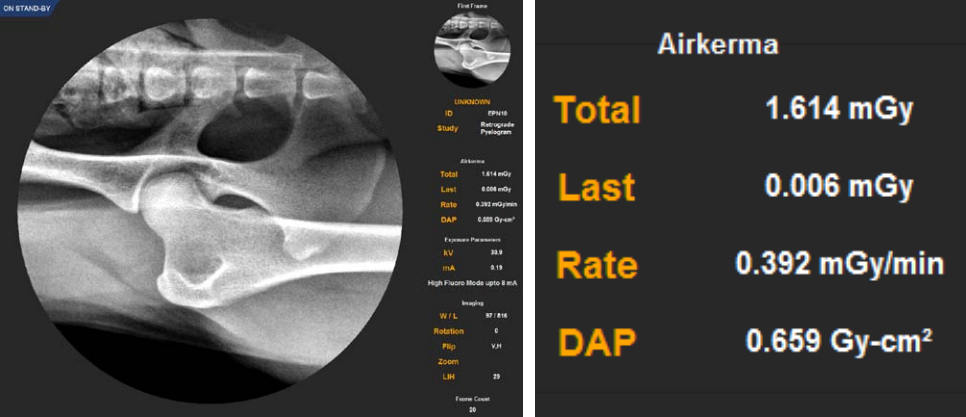
Urology



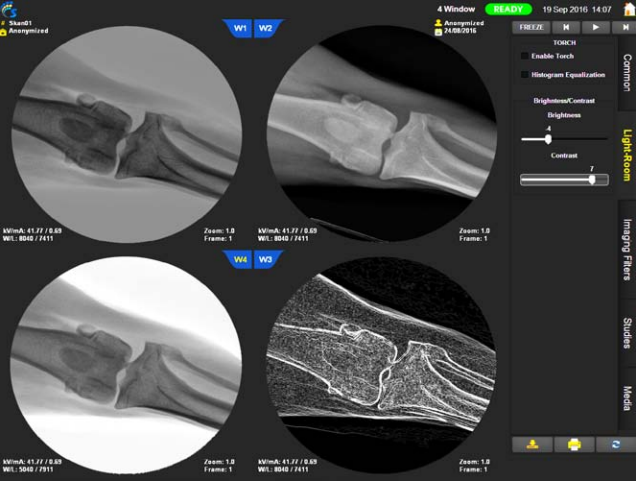
Edge Enhancement



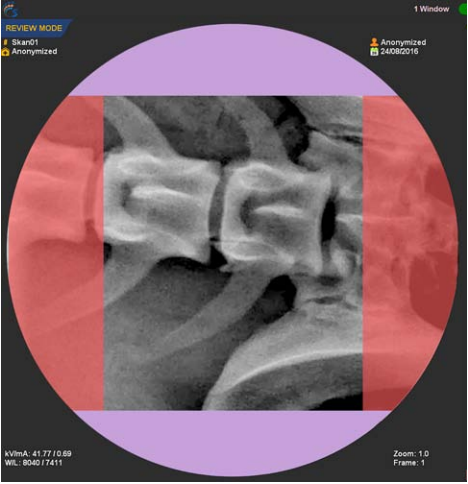
Airkerma on display



Multi-Window

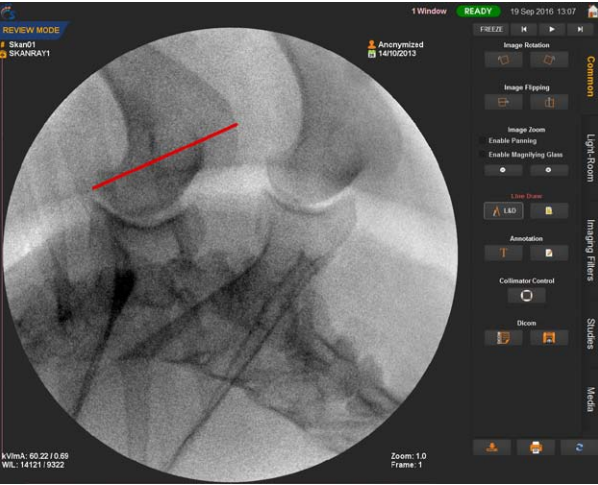


Virtual Collimation

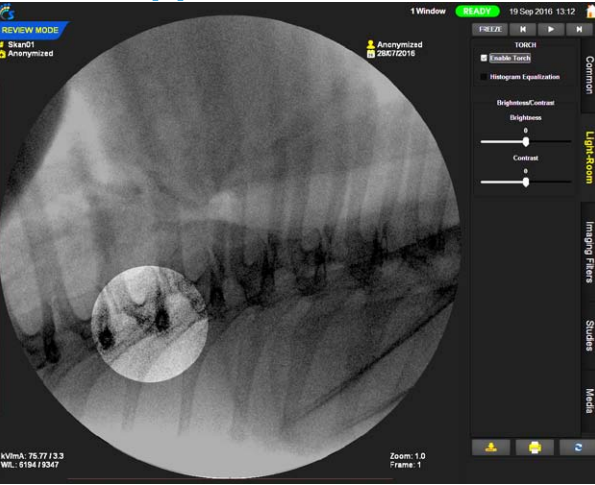


FEATURES

Line Measurement



Torch Application



DSA



Laser Aimer

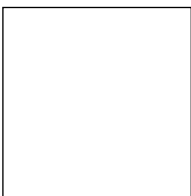


Other Features

- ▶ Small footprint
- ▶ Clean power from mains through UPF control
- ▶ Counter balanced C for ease of posturing and comfortable operation.
- ▶ Overscan / Underscan: -40°/+90°.
- ▶ Line Measurement to measure bones or screws during the surgery.
- ▶ Image Intensifier Magnification from 9, 6 and 4.5 inches can be achieved.
- ▶ Auto Technique for consistent image quality under varying anatomy densities.
- ▶ Images processing such as Zoom, flip, invert, torch and median.
- ▶ Image rotation on both active and passive monitors when offline.
- ▶ Snapshot feature produces Digital Radiography image quality in fluoro mode.
- ▶ Image Annotations feature to record and communicate the observations.
- ▶ Studies can be saved in MKV video, JPEG & DCM image Formats.
- ▶ Security Enabled for unintended user with Login Facility.
- ▶ DICOM 3 Compliant Image transfers to PACS / Printer.
- ▶ Manual and Auto-save option for images and video.
- ▶ Manual APF table and APR to select kVp and mA.



X-Ray Tube	
X-Ray Tube Type	Fixed Anode
Nominal Focal Spot Value	0.6/1 .8 as per 1EC60336
Maximum Anode Heat Capacity	56kHU
Maximum Housing Heat Capacity	1150kHU
Total Filtration	>0.1 inch (2.5mm) of AI eq.
HF X-Ray Generator	
Mode of Operation	Fluoroscopy, Radiography
Maximum Output in Large Focus	[2.2kW (110V) / 3.5kW (220 - 240V)] For 100mS
Maximum Continuous Output in Small Focus	500 W (10 min)
kV Range	40 – 110 kV
Maximum Tube Current (Large Focus)	70mA @ 50kV, 32mA @ 110kV (220 – 240VAC) 55mA @ 40kV, 20mA @ 110kV (110 VAC)
Frequency	80 – 250 kHz
Continous/ Pulsed Fluoroscopy	
mA Range for Continuous Fluoro	0.2 to 8 mA
mA Range for Pulsed Fluoro	0.2 to 12 mA
Digital Snap Shot	0.2 to 10 mA
Radiography	
kV and mAs Range	40 to 110kV, [0.5 to 200mAs (110VAC) / 0.5 - 240mAs (220 - 240vAc)]
Collimator	
Collimation Types	Hard & Soft Shutters with Circular IRIS
Mechanical Specifications	
Immersion Depth	26.34" (670mm)
Clear space (free space)	30.31" (770mm)
Vertical Travel	17.71" (450mm)
Horizontal Travel	7.87" (200mm)
Orbital Motion	-40° to 90° Max



Raytech Diagnostics
<https://raytechdiagnostics.com/>
sales@raytechdiagnostics.com
Tel: 888-721-1982



RADIOLOGY



MONITORING



CARDIOLOGY



ANAESTHESIA



VENTILATION



DENTAL



SURGERY



TELE SOLUTIONS



VETERINARY

Skanmar continuously upgrades its technology, performance and safety features. Pictures and specifications featured in this catalogue are only indicative. Please refer to the commercial offer document for specifications and performance.