

## ExamVue 10" x 13" Flat Panel Detectors



ExamVue 10" x 13" Flat Panel Detectors

### Panel Detector Features



**Glassless Substrate**  
**Resistant to dropping**



**10" x 13" Image Area**  
**100 $\mu$ m Resolution**



**Works with All X-ray Generators**



**Lower Patient Dose with CSI Tech**



**Great Images with Larger Patients**



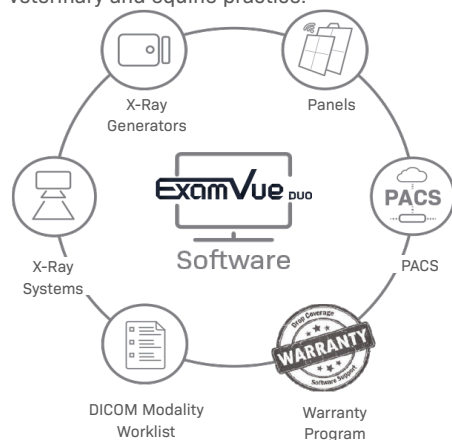
**AED** **Automatic Exposure Detection**



**Wireless and Battery Powered**

### ExamVue Duo Acquisition Software

With state of the art and intuitive imaging tools, our ExamVue™ Duo equine software produces clear, concise, and quality images with even the oldest generators. ExamVue™ PACS comes standard with diagnostic tools and can be expanded even further with the JPI Cloud PACS. Reliable and convenient, the ExamVue™ Duo software seamlessly integrates into any veterinary and equine practice.



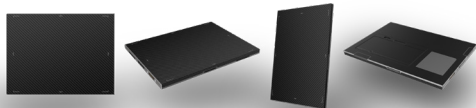
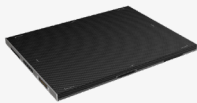
### Contact us:

3555 Veterans Memorial Hwy, Unit D  
Ronkonkoma, NY 11779  
sales@jpihealthcare.com  
(516) 513-1330 Ext. 3



www.jpihealthcare.com

TECHNICAL  
SPECIFICATIONS



ExamVue Detectors		10x13 Wireless	
Sensor			
Scintillator		Direct Deposit Csl:Ti	
Active Area		254 x 330.2 mm	
Pixel Array		2518 x 3318	
Pixel Pitch		100 µm	
Image Quality			
Spatial Resolution		4.16 lp/mm	
A/D Conversion		16 bits	
Full Image Time		2-3 sec	
MTF		70% ... .. (@ 1 lp/mm) 40% ... .. (@ 2 lp/mm) 25% ... .. (@ 3 lp/mm) 15% ... .. (@ 4 lp/mm)	
DQE		~ 70% ... .. (@ 0 lp/mm) ~ 40% ... .. (@ 3 lp/mm)	
Communication			
Communication Interface		WiFi / Tethered	
Exposure Control		F²AED Manual Sync	
Mechanical			
Dimension		269 x 362 x 15 mm	
Weight		2 kg	
Environmental			
Operating Temperature		10°C - 35°C	
Operating Humidity		5% - 90% RH	
Storage Temp		-20°C - 55°C	
Storage Humidity		5% - 95% RH	
IP Rating		IP67	
Power			
Max Power (Standby/Operating)		< 8W / 17W	
Power Supply		100-250V AC	
Frequency		50 / 60 Hz	
Battery Autonomy		8.5 h @ 90 s cycle	