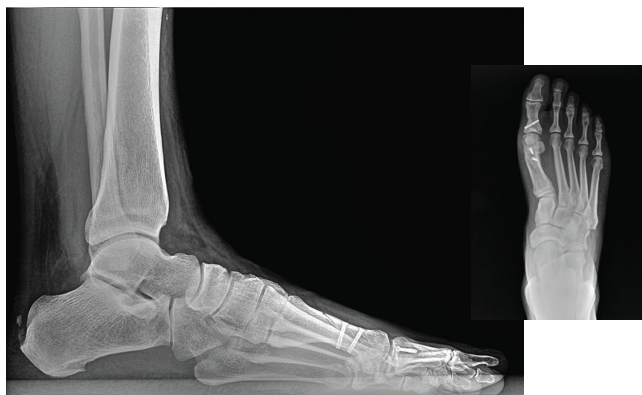


## Tiger DR-RC Podiatry



### Most Advanced Cesium Flat Panel DR Solution



#### The Industry Leading DR Upgrade for Image Quality

Tiger DR – RC is the industry leading **CESIUM** flat panel imaging solution for the podiatry market, which allows podiatrists a smart and cost-effective way to upgrade their current x-ray systems.

Tiger DR – RC comes with a single handle detector encasement that is designed for increased maneuverability and durability. Our specialized encasement has been designed to fit exclusively into our universal retrofit orthoposer, which allows for simple and easy integration with most x-ray models from leading manufacturers like X-Cel X-Ray, MinXray and Poskom. At only 3.5" tall, it's simple to position patients for every view.

TigerView is a podiatry-specific PACS software that understands the needs of the practitioner and has been developed with 30+ different podiatry measurements. Comprehensive AP and Lateral tool sets provide for quick and efficient patient diagnosis. Enjoy improved workflow with our user-friendly software.

Standard TigerView Retrofit packages include:

- ADA compliant ortho-base
- Ergonomic panel encasement
- 23" computer
- TigerView Podiatry PACS software
- Five viewing software licenses
- Bridges to EMR, EHS & PMS
- On-site install and training



5 lbs



Panel available tethered or wireless



6 second image acquisition time



Directly integrates with TigerView software



No cassettes necessary



2 year x-ray Electrical  
5 year x-ray Mechanical  
5 year panel warranty

Call us for an in-office demo today  
**1-800-385-9593**



RAYTECH-DIAGNOSTICS  
613-799-4171  
sales@raytechdiagnostics.com  
<https://raytechdiagnostics.com>

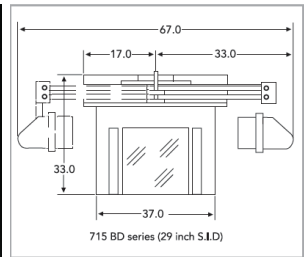
# Tiger DR-RC Podiatry

## Most Advanced Cesium Flat Panel DR Solution

### SPECIFICATIONS

Sensor	
Scintillator	CsI
Active Area	307 x 246 mm <sup>2</sup>
Pixel Array	2560 x 2048
Pixel Pitch	120 µm
Image Quality	
Limiting Resolution	>4.2 lp
MTF	70% (@1 lp/mm) 40% (@2 lp/mm) 25% (@3 lp/mm) 15% (@4 lp/mm)
DQE (RQA5, 14µGy)	~70% (@0 lp/mm) ~33% (@3 lp/mm)
Sensitivity	~0.62ct/nGy
Response Non-linearity	< ±0.5%
Maximum Linear Dose	> 95µGy
Dark Noise	~ 10nGy
Dynamic Range	~ 82 dB
Communication Interface	
Image Acquisition Time	8 seconds
Exposure Control	F <sup>2</sup> AED External Sync/Manual
Communication Interface	WiFi/Gigabit Ethernet

Environmental	
Operating	
Temperature Range	0 - 40°C
Humidity Range (non-condensing)	30% - 75% RH
Storage	
Temperature Range	-20°C - 55°C
Humidity Range	10% - 90% RH
Water / Dust Proof	IP64
Mechanical	
Dimensions	33.3 x 28.2 x 1.5 cm <sup>2</sup>
Weight	~2.3 kg
Housing Material	Front: Carbon Fiber Back: Aluminum Alloy
Power	
Maximum Power	Standby: 8W Operating: 17W
AC Power	
Power Supply	100 - 240V AC
Frequency	50/50 Hz
Battery	3200 mAH, 14.7V



Call us for an in-office demo today  
**1-800-385-9593**

2RAYTECH-DIAGNOSTICS  
613-799-4171  
sales@raytechdiagnostics.com  
<https://raytechdiagnostics.com>